




SENEC

- Quality German-built technology
- Cutting-edge energy management
- Pay less for reliable power

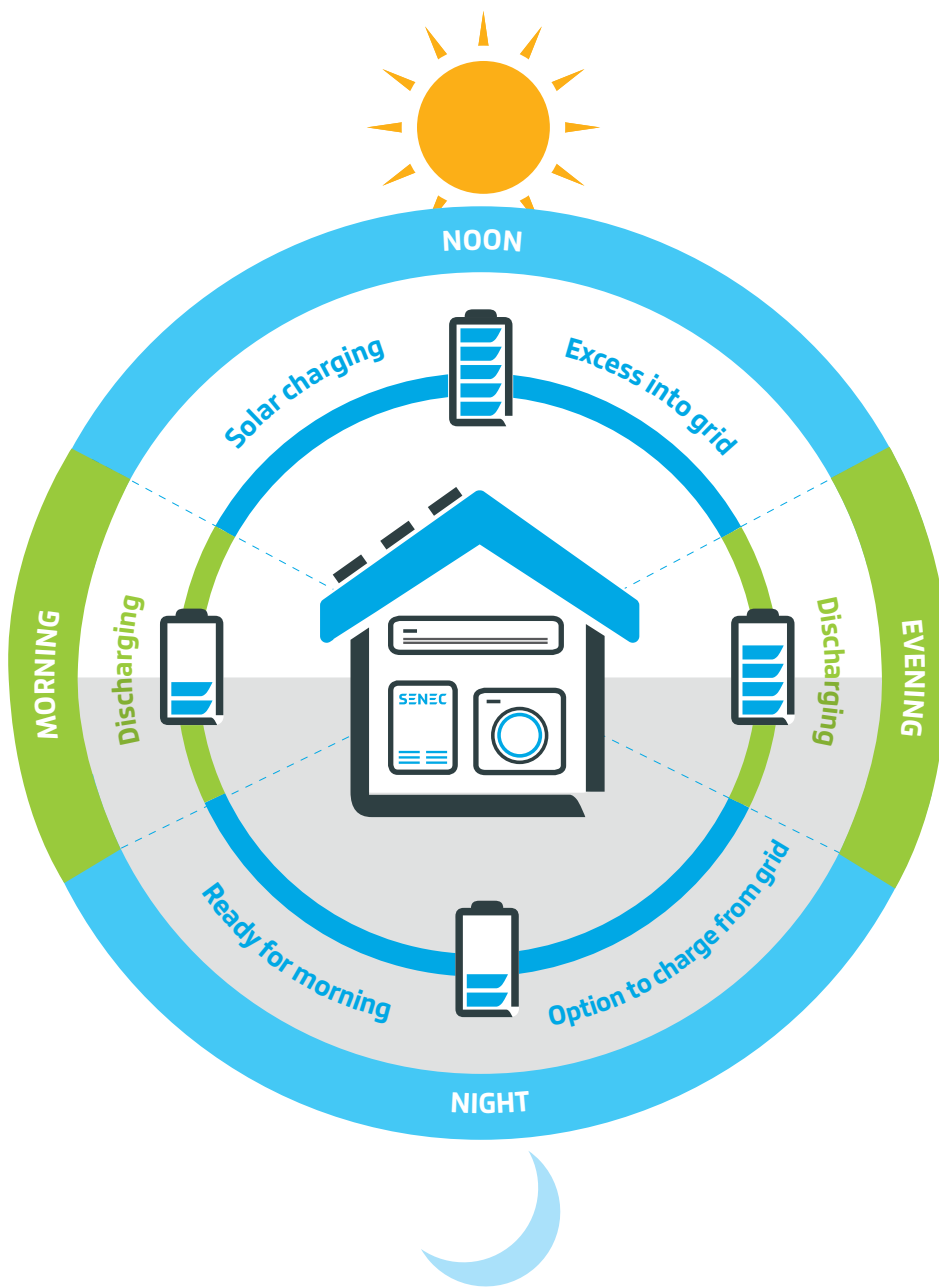
Take control of your family's power supply

Introducing long-life SENEK Intelligent Energy System



**Now you can manage
your own solar-generated
power 24 hours a day**

**Solar panels are great whilst the sun
shines. But now, you can store that
valuable free energy and use it
whenever you want – even at night.**



MORNING.

After supplying power to meet the high morning demand, your system is recharged by the sun.

NOON.

Now your system's fully charged, any excess power is fed into the main grid.

EVENING.

As light levels drop, solar panels alone can't meet the high evening demand. The SENECHOME system automatically supplies the shortfall.

NIGHT.

Your SENECHOME system works throughout the night. After your peak demand you can choose to replenish from the grid at off-peak rates for the morning.

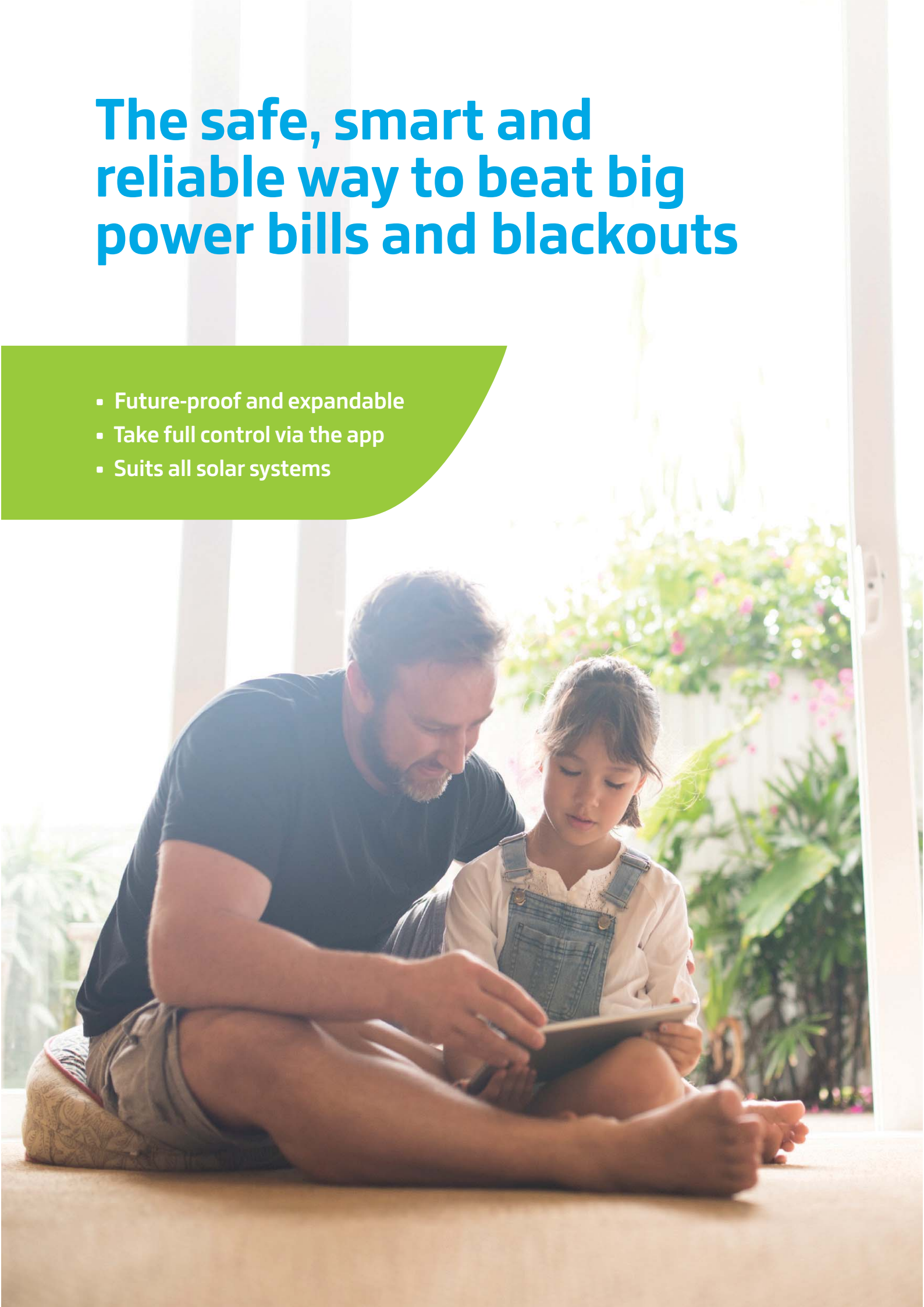
Say goodbye to peak energy rates

On a sunny day, your solar panels will generate more than enough electricity to power your home and its appliances.

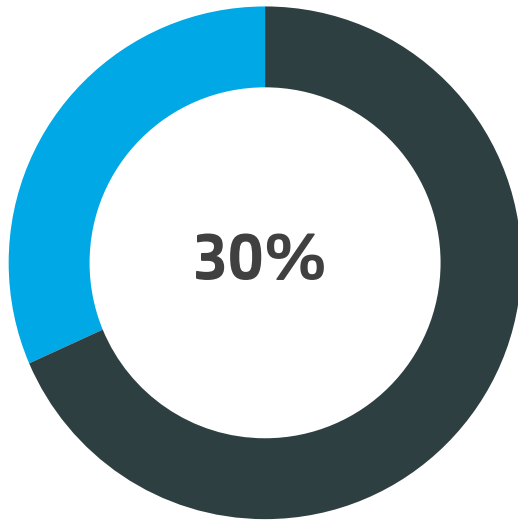
The Senec.Home Li gives you the ability to control when you use your solar power. Think of the SENECHOME system as a giant, rechargeable battery that automatically steps in when the sun goes down. And it's smart enough to manage your power needs without you doing a thing. Around the time most people are stretching the grid to maximum capacity, you will be happily independent.

The safe, smart and reliable way to beat big power bills and blackouts

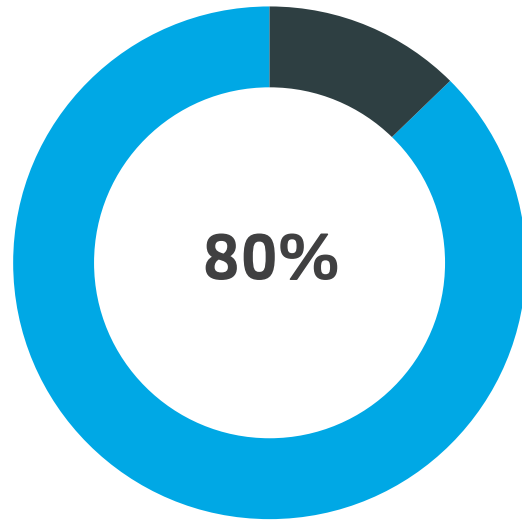
- Future-proof and expandable
- Take full control via the app
- Suits all solar systems



Increase your power self-sufficiency to 80% or more



Solar



Solar + Storage

Install a SENEK system, and your power bills will drop dramatically.

In fact, in an average Australian installation, you'll be able to generate and store over 80% of your power requirements.

If you need more storage, you can add up to 4 SENEK units to create your own micro-grid.

Your SENEK system is also smart enough to supply electricity to your home when there's a power cut on the grid so you can keep your essential appliances running even throughout a blackout.



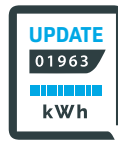
The SENEK.Home Li is engineered for 12,000 recharging cycles; that's double the capacity of its main competitor.

German technology with full Australian service and support

The SENEK.Home.Li system is available in 4 different capacities to suit every application from a small apartment through to a full-sized family home or small business.



10 year manufacturer's warranty and 20 years estimated operating life



Internet-connected for free software updates and intelligent energy management



Maintenance-free Panasonic Lithium batteries with high power density

System Technical Data

Operating Mode	Fully Automatic			
Max. Power Inverter	1.250 W	2.500 W	2.500 W	2.500 W
Backup Power*	Yes			
Dimensions (W/H/D)	530 mm / 1.125 mm / 406 mm			
Total System Weight	77 kg	102 kg	127 kg	152 kg

Technical Data Battery

Battery Manufacturer	Panasonic			
Max. Number of Charging Cycles	12.000			
Max. Usable Capacity**	2,5 kWh	5,0 kWh	7,5 kWh	10,0 kWh
Battery Technology	Lithium-Ion			
Max. Battery Efficiency	98 %			

Environmental Conditions

Ambient Operating Temperature	0° C to +40° C			
Relative Humidity	10–85 % (Non-Condensing)			

* For the use of the optional emergency power supply, costs for the additional package, additional material and installation are charged.

** Depending on the loading and unloading conditions, e.g. Temperature, frequency of use and charging and discharging current.



Stylish and space-saving design made in Germany, supported in Australia.

The SENECHOME Li is a new generation, home energy storage system that's already installed 14,000 units in Germany.

Its intelligent charging technology gently replenishes the battery power giving the system a life-expectancy of up to 20 years. Internet-connected, the system will also install its own software updates and let you track and control your energy usage via the SENECHOME smartphone app.



Store

your solar power to use
whenever you need it.

Save

on your power bills with
intelligent technology.

