

UJ6 series

225Wp PV-UJ225GA6

220Wp PV-UJ220GA6

210Wp PV-UJ210GA6

Photovoltaic Modules

Mitsubishi Electric is a global leader in providing superior-quality photovoltaic modules to businesses and residences around the world. With more than 36 years experience in the photovoltaic industry, we manufacture products that are designed and built for optimal efficiency and reliability. With a name like Mitsubishi Electric, you can be sure you're getting the best.

Excellent Workmanship

For more than three decades, we have been perfecting our PV modules to bring you the highest quality products possible. Superior craftsmanship, engineering excellence and attention to the finest detail ensure longevity and optimal performance.

- Lower slope of module frame reduces accumulation of dust
- Straight tabs ensure integrity of electrical connections
- 25-year power output warranty

High Power Output

Our modules are designed with high efficiency and high power output in mind to utilize limited space while giving you a higher return on investment.

- Unique 4 bus bar cell design increases efficiency
- Power tolerance of +3/- 3%
- High power output in real-life conditions
- Solder-free cells for increased efficiency
- Bypass diode maximizes power output in shaded conditions
- Back film and high-transmittance glass for increased light absorption

Safe, Durable and Easy to Install

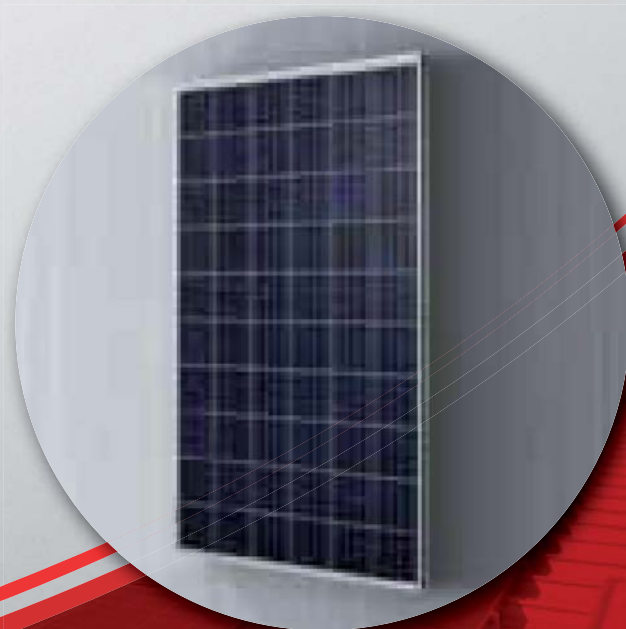
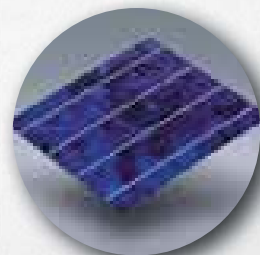
Engineered to withstand tough outdoor conditions, our modules are among the most durable in the industry. Designed for fast and easy installation, Mitsubishi Electric solar panels are lightweight and include the latest safety features.

- Four layer junction box for added reliability and safety
- Lightweight (44 lbs) for a faster, safer installation
- Corrosion-resistant anodized frame
- New frame design strengthens module and eases installation
- Tempered glass and locking connectors for safety
- Additional grounding options reduce installation time
- Can be installed in areas near salt water
- 5,400 Pa IEC Static load test passed

Eco-friendly

From our manufacturing process to our recyclable packaging, we have made a true commitment to protect the environment. For us, it's not just the end product that counts, but the entire production cycle.

- 100% lead-free solder in all of our modules
- ISO 14001 certified for eco-friendly manufacturing processes
- Minimal cardboard packaging and recyclable steel pallets



CAPENERGIE



MITSUBISHI
ELECTRIC

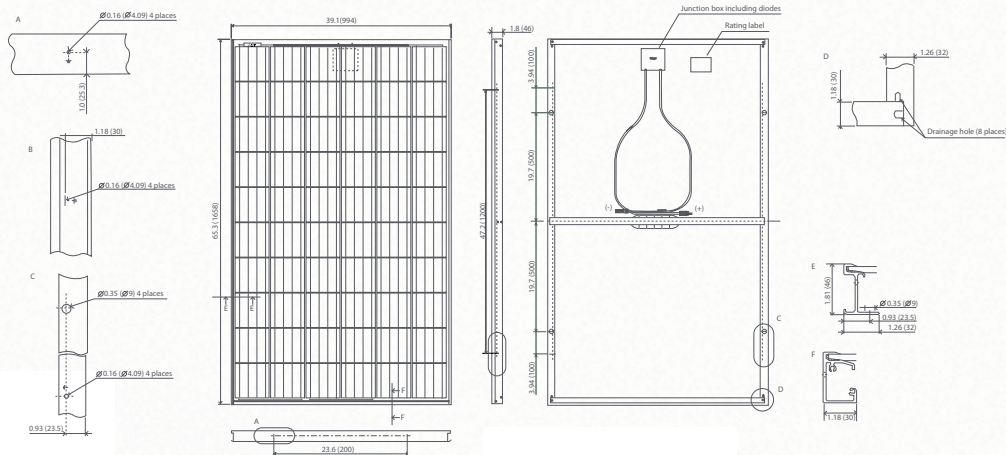
SOLAR ELECTRIC INNOVATIONS

Mitsubishi Electric Photovoltaic Module

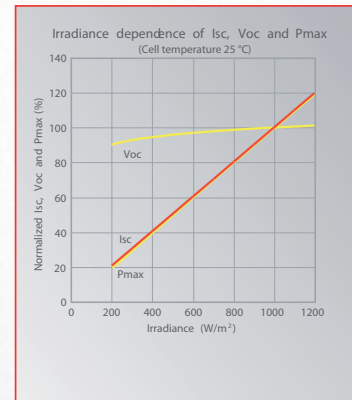
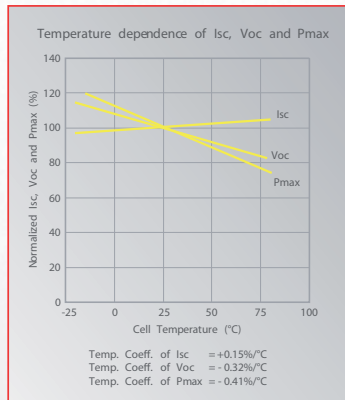
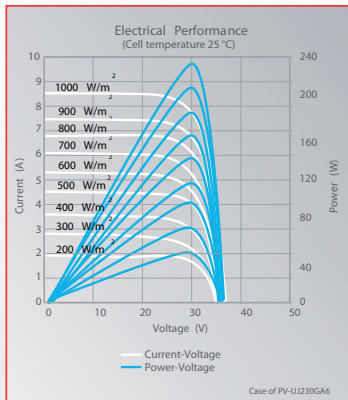
Specification Sheet

Manufacturer		MITSUBISHI ELECTRIC		
Model name	PV-UJ225GA6	PV-UJ220GA6	PV-UJ210GA6	
Cell type	Polycrystalline Silicon, 156 mm x 156 mm			
Number of cells	60 cells in a series			
Maximum power rating (Pmax)	225 Wp	220Wp	210 Wp	
Warranted minimum Pmax	218.3 Wp	213.4 Wp	203.7 Wp	
PV USA test condition rating (PTC)	203.2	198.6	189.4	
Open circuit voltage (Voc)	36.4V	36.2V	35.8V	
Short circuit current (Isc)	8.30A	8.20A	8.00A	
Maximum power voltage (Vmp)	30.0V	29.7V	29.2V	
Maximum power current (Imp)	7.50A	7.39A	7.19A	
Module efficiency	13.7%	13.3%	12.7%	
Tolerance of maximum power rating	+3/-3 %			
Static load test passed	5,400 Pa			
Number of bus bars per cell	4 Bus bars			
Normal operating cell temperature (NOCT)	47 degree C			
Maximum system voltage	DC 600 V			
Fuse rating	15 A			
Dimensions	65.3 x 39.1 x 1.81 inch (1658 x 994 x 46 mm)			
Weight	44 lbs (20 kg)			
Number of modules per pallet	20			
Number of modules per container (40 ft. container)	560			
Packing contents	2 pcs - 1 carton			
Output terminal	(Positive) 1025mm (Negative) 1025mm with MC connector (PV-KBT4/6 I-UR, PV-KST4/6 I-UR)			
Certifications	IEC 61215 2nd Edition, UL1703 3rd edition			
Fire rating	Class C			

Drawings and Dimensions Unit: inch (mm)



Electrical Characteristics



Cap Energie
 Distributeur officiel France
 Mas D'Ahlem - 34150 La Boissière | Téléphone: +33 (0)4.67.56.77.91 | info@capenergie.fr
www.capenergie.eu