

REC TWINPEAK SERIES

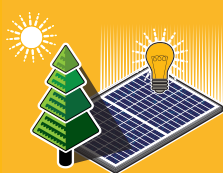
PREMIUM SOLAR PANELS WITH SUPERIOR PERFORMANCE

REC TwinPeak Series solar panels feature an innovative design with high panel efficiency and power output, enabling customers to get the most out of the space used for the installation.

Combined with industry-leading product quality and the reliability of a strong and established European brand, REC TwinPeak panels are ideal for residential and commercial rooftops worldwide.



**MORE POWER
OUTPUT PER M²**



**IMPROVED PERFORMANCE
IN SHADED CONDITIONS**

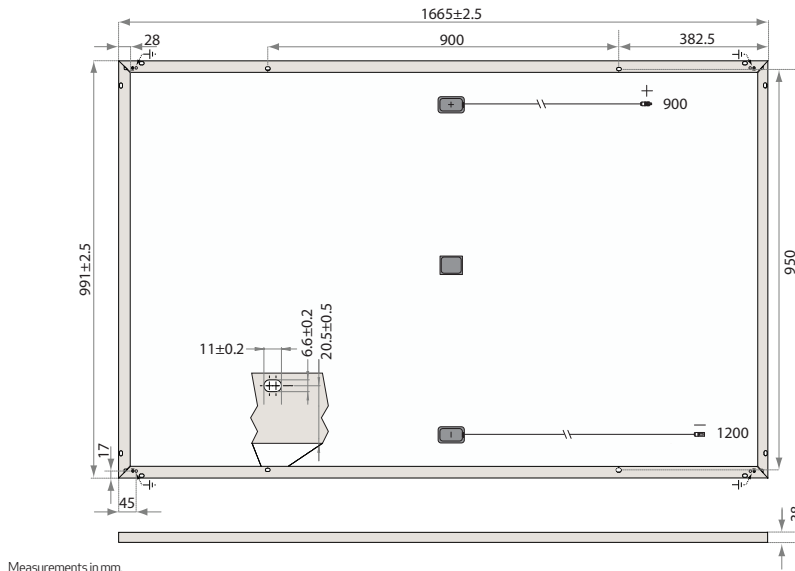


**100%
PID FREE**



**REDUCES BALANCE OF
SYSTEM COSTS**

REC TWINPEAK SERIES



Measurements in mm.

| ELECTRICAL DATA @ STC | Product Code*: RECxxxTP | | | | |
|---------------------------------------|-------------------------|------|------|------|------|
| Nominal Power - P_{MPP} (Wp) | 265 | 270 | 275 | 280 | 285 |
| Watt Class Sorting - (W) | 0/+5 | 0/+5 | 0/+5 | 0/+5 | 0/+5 |
| Nominal Power Voltage - V_{MPP} (V) | 31.1 | 31.2 | 31.4 | 31.9 | 32.1 |
| Nominal Power Current - I_{MPP} (A) | 8.53 | 8.66 | 8.76 | 8.78 | 8.90 |
| Open Circuit Voltage - V_{OC} (V) | 38.3 | 38.6 | 38.8 | 39.2 | 39.5 |
| Short Circuit Current - I_{SC} (A) | 9.21 | 9.29 | 9.40 | 9.44 | 9.54 |
| Panel Efficiency (%) | 16.1 | 16.4 | 16.7 | 17.0 | 17.3 |

Values at standard test conditions STC (airmass AM 1.5, irradiance 1000 W/m², cell temperature 25°C).

At low irradiance of 200 W/m² (AM 1.5 and cell temperature 25°C) at least 95% of the STC module efficiency will be achieved.

*Where xxx indicates the nominal power class (P_{MPP}) at STC indicated above, and can be followed by the suffix BLK for black framed modules.

| ELECTRICAL DATA @ NOCT | Product Code*: RECxxxTP | | | | |
|---------------------------------------|-------------------------|------|------|------|------|
| Nominal Power - P_{MPP} (Wp) | 195 | 198 | 202 | 205 | 209 |
| Nominal Power Voltage - V_{MPP} (V) | 28.8 | 28.9 | 29.0 | 29.5 | 29.6 |
| Nominal Power Current - I_{MPP} (A) | 6.77 | 6.87 | 6.95 | 6.97 | 7.06 |
| Open Circuit Voltage - V_{OC} (V) | 35.2 | 35.5 | 35.7 | 36.1 | 36.3 |
| Short Circuit Current - I_{SC} (A) | 7.32 | 7.38 | 7.47 | 7.50 | 7.58 |

Nominal operating cell temperature NOCT (800 W/m², AM 1.5, windspeed 1 m/s, ambient temperature 20°C).

*Where xxx indicates the nominal power class (P_{MPP}) at STC indicated above, and can be followed by the suffix BLK for black framed modules.

CERTIFICATIONS

IEC 61215, IEC 61730 & UL 1703. IEC 62804 (PID Free),
IEC 61701 (Salt Mist Level 6), IEC 62716 (Ammonia Resistance),
ISO 11925-2 (Ignitability Class E), UNI 8457/9174 (Class A),
ISO 9001:2015, ISO 14001, OHSAS 18001

WARRANTY

10 year product warranty
25 year linear power output warranty
(max. degradation in performance of 0.7% p.a.)
See warranty conditions for further details.

takeaway
for an easy way
take-away WEEE Compliant
Recycling scheme

Founded in Norway in 1996, REC is a leading vertically integrated solar energy company. Through integrated manufacturing from silicon to wafers, cells, high-quality panels and extending to solar solutions, REC provides the world with a reliable source of clean energy. REC's renowned product quality is supported by the lowest warranty claims rate in the industry. REC is a Bluestar Elkem company with headquarters in Norway and operational headquarters in Singapore. REC employs more than 2,000 people worldwide, producing 1.4 GW of solar panels annually.

17.3% EFFICIENCY

10 YEAR PRODUCT WARRANTY

25 YEAR LINEAR POWER OUTPUT WARRANTY

TEMPERATURE RATINGS

| | |
|---|---------------|
| Nominal operating cell temperature (NOCT) | 44.6°C (±2°C) |
| Temperature coefficient of P_{MPP} | -0.36 %/°C |
| Temperature coefficient of V_{OC} | -0.30 %/°C |
| Temperature coefficient of I_{SC} | 0.066 %/°C |

GENERAL DATA

| | |
|---------------|---|
| Cell type: | 120 RECHC multi-crystalline 6 strings of 20 cells (156 x 78 mm) |
| Glass: | 3.2 mm solar glass with anti-reflective surface treatment |
| Back sheet: | Highly resistant polyester |
| Frame: | Anodized aluminum (Available in silver or black) |
| Junction box: | 3-part (3 bypass diodes), IP67 rated 4 mm ² solar cable, 0.9 m + 1.2 m |
| Connectors*: | Stäubli MC4PV-KBT4/PV-KST4 (4 mm ²) Tonglin TL cable-01 (4 mm ²) *dependent on product type |

MAXIMUM RATINGS

| | |
|--------------------------|---------------------------------|
| Operational temperature: | -40 ... +85°C |
| Maximum system voltage: | 1000 V |
| Maximum snow load: | 550 kg/m ² (5400 Pa) |
| Maximum wind load: | 244 kg/m ² (2400 Pa) |
| Max series fuse rating: | 25 A |
| Max reverse current: | 25 A |

MECHANICAL DATA

| | |
|-------------|---------------------|
| Dimensions: | 1665 x 991 x 38 mm |
| Area: | 1.65 m ² |
| Weight: | 18 kg |

Note! Specifications subject to change without notice.



www.recgroup.com