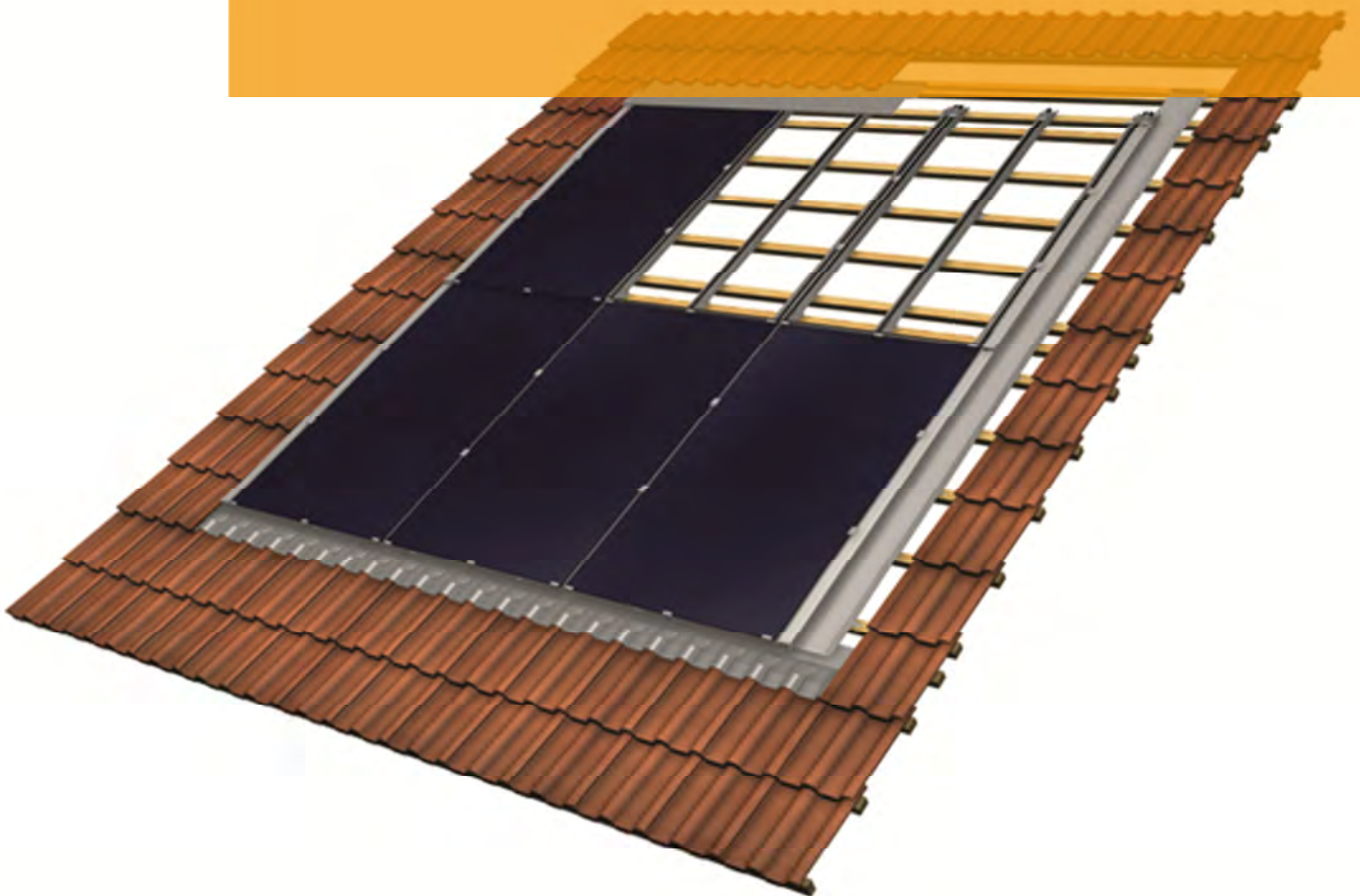




In-roof system Kappa
Product catalogue



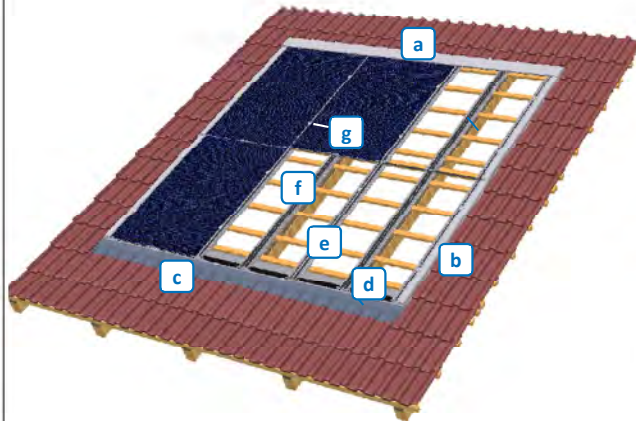
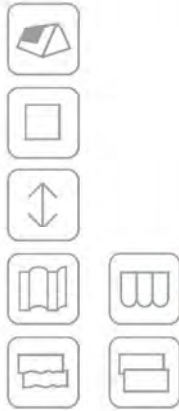
Content

KAPPA.....	3
1. KAPPA PROFILES.....	4
2. KAPPA FLASHINGS.....	7
3. KAPPA SUCTION SAFEGUARD.....	10
4. KAPPA RUBBER PIECES.....	11
5. KAPPA SEALING STRIPS.....	11
6. KAPPA MISCELLANEOUS.....	12

In general:

- | For all business transactions, Mounting Systems GmbH's "General terms and conditions" are valid, as well as any items negotiated and confirmed for a specific transaction.
 - | Through the publishing of this catalogue, all former catalogues become invalid.
 - | All information in this document may be subject to alterations.
-

Kappa



Components

- a. Top flashing
- b. Lateral flashing
- c. Sealing strip
- d. Eaves part
- e. Module support profile lateral
- f. Module support profile centre
- g. Suction safeguard

Not depicted: ridge parts, small parts

Notes

- | Kappa can be ordered **piece by piece**.
- | Using our **Quick Configurator**, you can easily create a bill of materials and calculate your price.
- | The correct length of the module support profiles are determined by the length of the laminate used. Please contact sales@mounting-systems.de for inquiries.
- | For this system, we have put together a wide range of **documentation** for your convenience. We can provide technical data sheets and installation manuals in different languages. Please do not hesitate to ask for them.
- | For requests concerning an adaptation of Kappa, please use our form “**Technical Planning Aid**” (cf. documents) and mail it to sales@mounting-systems.de.
- | **Delivery time:** Goods issue ex works within 3 days after receipt of written order

1. Kappa Profiles

Aluminium (EN AW 6063 T66)

Description

Module support profile

Vertical support for two laminates, preassembled and containing:

- | Module support profile
- | 2 protective EPDM inlays
- | 2 Module hooks, A2, black, inside dimension in three versions



Module support profile centre

Vertical mid-support for one laminate, pre-assembled and containing:

- | Module support profile
- | 1 protective EPDM inlay
- | 1 module hook, A2, black, inside dimension in three versions

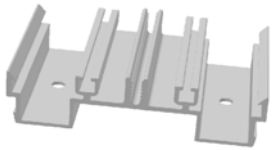


For laminate lengths	Description	Laminate thickness	Single part	
			Standard	Centre
550-599 mm	KMSP 650 mm	4-6mm		
		6-8mm	714-0272	714-0288
		8-10mm		
600-649 mm	KMSP 700 mm	4-6mm	714-0224	714-0248
		6-8mm		
		8-10mm		
650-699 mm	KMSP 750 mm	4-6mm	714-0225	714-0249
		6-8mm		
		8-10mm		
700-749 mm	KMSP 800 mm	4-6mm	714-0226	714-0250
		6-8mm		
		8-10mm		
750-799 mm	KMSP 850 mm	4-6mm	714-0227	714-0251
		6-8mm		
		8-10mm		
800-849 mm	KMSP 900 mm	4-6mm	714-0228	714-0252
		6-8mm		
		8-10mm		
850-899 mm	KMSP 950 mm	4-6mm	714-0229	714-0253
		6-8mm	714-0273	714-0289
		8-10mm		
900-949 mm	KMSP 1000 mm	4-6mm	714-0230	714-0254
		6-8mm	714-0274	714-0290
		8-10mm	714-0304	714-0321
950-999 mm	KMSP 1050 mm	4-6mm	714-0231	714-0255
		6-8mm	714-0275	714-0291
		8-10mm	714-0305	714-0322
1000-1049 mm	KMSP 1100 mm	4-6mm	714-0232	714-0256
		6-8mm	714-0276	714-0292
		8-10mm	714-0306	714-0323
1050-1099 mm	KMSP 1150 mm	4-6mm	714-0233	714-0257
		6-8mm	714-0277	714-0293
		8-10mm	714-0307	714-0324

For laminate lengths	Description	Laminate thickness	Single part	
			Standard	Centre
1100-1149 mm	KMSP 1200 mm	4-6mm	714-0234	714-0258
		6-8mm	714-0278	714-0294
		8-10mm	714-0308	714-0325
1150-1199 mm	KMSP 1250 mm	4-6mm	714-0235	714-0259
		6-8mm	714-0279	714-0295
		8-10mm	714-0309	714-0326
1200-1249 mm	KMSP 1300 mm	4-6mm	714-0236	714-0260
		6-8mm	714-0280	714-0296
		8-10mm	714-0310	714-0327
1250-1299 mm	KMSP 1350 mm	4-6mm	714-0237	714-0261
		6-8mm	714-0281	714-0297
		8-10mm	714-0311	714-0328
1300-1349 mm	KMSP 1400 mm	4-6mm	714-0238	714-0262
		6-8mm	714-0282	714-0298
		8-10mm	714-0312	714-0329
1350-1399 mm	KMSP 1450 mm	4-6mm	714-0239	714-0263
		6-8mm	714-0283	714-0299
		8-10mm	714-0313	714-0330
1400-1449 mm	KMSP 1500 mm	4-6mm	714-0240	714-0264
		6-8mm	714-0284	714-0300
		8-10mm	714-0314	714-0331
1450-1499 mm	KMSP 1550 mm	4-6mm	714-0241	714-0265
		6-8mm	714-0285	714-0301
		8-10mm	714-0315	714-0332
1500-1549 mm	KMSP 1600 mm	4-6mm	714-0242	714-0266
		6-8mm	714-0286	714-0302
		8-10mm	714-0316	714-0333
1550-1599 mm	KMSP 1650 mm	4-6mm	714-0243	714-0267
		6-8mm	714-0287	714-0303
		8-10mm	714-0317	714-0334
1600-1649 mm	KMSP 1700 mm	4-6mm	714-0244	714-0268
		6-8mm		
		8-10mm	714-0318	714-0335
1650-1699 mm	KMSP 1750 mm	4-6mm	714-0245	714-0269
		6-8mm		
		8-10mm		
1700-1749 mm	KMSP 1800 mm	4-6mm	714-0246	714-0270
		6-8mm		
		8-10mm		
1900-1949 mm	KMSP 2000 mm	4-6mm		
		6-8mm		
		8-10mm	714-0319	714-0336
1950-1999 mm	KMSP 2050 mm	4-6mm	714-0247	714-0271
		6-8mm		
		8-10mm	714-0320	714-0337

Eaves part

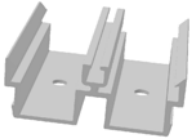
Base for the fixation of the lowest row of module support profiles



For the fixation of the eaves part to the roof batten, 2 roofing screws 4.5 x 35 mm are necessary (see below).

Eaves part centre

Base for the fixation of the lowest row of middle support profiles



For the fixation of the eaves part to the roof batten, 2 roofing screws 4.5 x 35 mm are necessary (see below).

	Single part	
	Standard	Centre
Eaves part 60mm	600-0023	600-0027

Ridge part

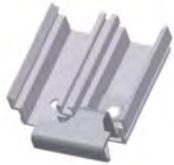
Fixing the topmost row of the module support profiles



Pre-assembled with 2 module hooks, A2, black

Ridge part centre

Fixing the topmost row of the middle support profiles

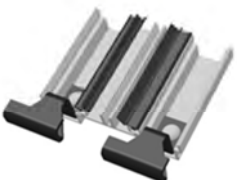
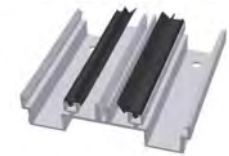


Pre-assembled with 1 module hook, A2, black

	Single part	
	Standard	Centre
Ridge part 60mm	704-0014	704-0019

Extra rail components for KPV modules

For KPV modules, the module manufacturer has stipulated a different type of mid-support, replacing the above listed centre support profiles, as well as centre eaves parts and centre ridge parts.



- 100mm support profile with EPDM for mid – support at the top of each module
- 60mm ridge part with EPDM for mid-support at the bottom of each module
- 390mm support profile with module hooks and EPDM for mid-support of the bottom-most modules (replacing at this point the 80mm ridge parts)

	Single part
100mm eaves part with EPDM	704-0018
60mm ridge part with EPDM	704-0017
KMSP 350, 9mm	714-0361

2. Kappa Flashings

Aluminium (EN AW 5005)

Description

Top flashing

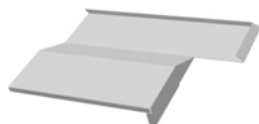
For a smooth transition between module field and the tiles above



	Single part	
Top flashing 16°, 2 m	Silver	801-0062
	Black	801-0111
Top flashing 30°, 2 m	Silver	801-0140
	Black	801-0105

Corner flashing

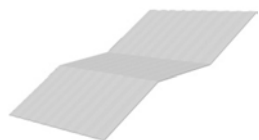
For a smooth transition between the top flashings and the lateral flashings



	Single part	
Left corner flashing 16°	Silver	801-0156
	Black	801-0158
Right corner flashing 16°	Silver	801-0157
	Black	801-0159
Left corner flashing 30°	Silver	801-0160
	Black	801-0162
Right corner flashing 30°	Silver	801-0161
	Black	801-0163

Striation connector

For a watertight connection between top flashings and/or corner flashings



For correct installation, the following additional components are necessary:

- | 2 top flashing sheets or 1 top flashing sheet and 1 corner flashing
- | 3 butyl strips
- | 1 triangular Styrofoam shim

	Single part	
Striation connector 16°		801-0113
Striation connector 30°		801-0114

Lower flashing

For a smooth transition between module field and the tiles below (optional)



Lower flashing, 2 m	Single part	
	Silver	801-0069
Black	801-0087	

Mid-flashing

For a watertight inner transition in non-rectangular configurations

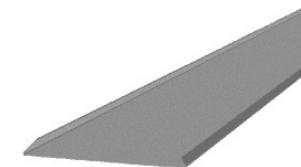


Upstand on both sides

Mid-flashing, 2 m	Single part	
	Silver	801-0007

Outer lateral flashing – standard version

For a smooth transition between module field and the tiles on either side



For correct installation, the following additional material is necessary:

- Fixing clips
- Roofing screws 4.5 x 35
- Inner lateral flashings standard version

Outer flashing standard version, 2 m	Single part	
	Silver	801-0060
Black	801-0103	

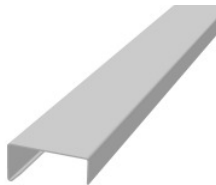
Inner lateral flashing - standard version, 50mm

Ensuring water-tightness between module field and the tiles on either side when using the standard version of the outer lateral flashing

For correct installation, the following additional material is necessary:

Outer lateral flashings standard version

For module length*	For module thickness	Single part	
		Color	Part number
802 - 812 mm	4 - 8 mm	Silver	801-0117
		Black	801-0118
822 – 832 mm	4 8 mm	Silver	801-0213
		Black	801-0214
840 - 850 mm	4 - 8 mm	Silver	801-0179
		Black	
981 – 991 mm	4 - 8 mm	Silver	801-0215
		Black	801-0216
990 - 1000 mm	4 - 8 mm	Silver	801-0205
		Black	801-0176
1328 - 1338 mm	4 - 8 mm	Silver	801-0133
		Black	801-0112
1364 – 1374 mm	4 - 8 mm	Silver	
		Black	801-0224
1444 - 1454mm	4 - 8 mm	Silver	
		Black	801-0206
1470 1480 mm	4 - 8 mm	Silver	
		Black	801-0207
1480 – 1490 mm	4-8mm	Silver	801-0237
		Black	
1500 – 1510 mm	4 - 8 mm	Silver	801-0130
		Black	801-0208
1520 – 1530 mm	4 - 8 mm	Silver	801-0219
		Black	
	8 - 10 mm	Silver	801-0220
		Black	
1574 - 1584 mm	4 - 8 mm	Silver	801-0115
		Black	801-0116
1600 – 1610 mm	8 – 10 mm	Silver	801-0221
		Black	
1640 – 1650 mm	4 - 8 mm	Silver	801-0217
		Black	801-0218
1642 – 1652 mm	4 - 8 mm	Silver	801-0210
		Black	801-0209
1647 - 1657 mm	4 - 8 mm	Silver	801-0061
		Black	801-0104
1659 – 1669 mm	4 – 8 mm	Silver	801-0236
		Black	
1674 - 1684 mm	4 - 8 mm	Silver	801-0066
		Black	801-0225
1963 – 1973 mm	4 - 8 mm	Silver	801-0204
		Black	801-0203



*Further lengths are readily available on request

3. Kappa Suction safeguard

Description

Suction safeguard

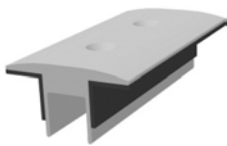
Securing the laminates against uplifting forces

- | Aluminium (EN AW 6063 T66)
- | EPDM 1mm (pre-assembled version)

We offer two versions of suction safeguard pieces: a version pre-assembled with EPDM strips, ready for installation, and a blank version which needs to be fitted with EPDM strips on-site prior to installation. For correct installation, the following additional material is necessary:

- | 2 (for 60mm pieces) or 4 (for continuous pieces) sheet metal screws 4.2 x 22 (for laminates 4-6mm thick) or 4.2 x 25 (for laminates 6-10mm thick)
- | EPDM 20x1mm, twice the length of the blank safeguard piece (to equip the blank suction safeguard pieces)

The number of 60mm suction safeguard pieces needed per module varies according to the type of laminate. When in doubt, please contact your module supplier. Alternatively, continuous, full-module-length suction safeguard pieces can be used.



	For module length*	Single part		
			blank	pre-assembled
Suction safeguard piece, 60 mm	uni-size	Silver		714-0352
		Black		714-0348
Suction safeguard piece, 950 mm	975 – 985 mm	Silver		
		Black	600-0097	714-0360
Suction safeguard piece, 961 mm	986 - 996 mm	Silver	600-0056	714-0379
		Black	600-0098	714-0378
Suction safeguard piece, 986 mm	1011 – 1021 mm	Silver	600-0093	714-0355
		Black	600-0094	714-0356
Suction safeguard piece, 1288 mm	1313 - 1323 mm	Silver		
		Black	600-0096	714-0357
Suction safeguard piece, 1332 mm	1357 - 1367 mm	Silver		
		Black	600-0107	714-0370
Suction safeguard piece, 1460 mm	1485 - 1495 mm	Silver	600-0099	714-0362
		Black	600-0100	714-0363
Suction safeguard piece, 1480 mm	1505 – 1515 mm	Silver	600-0102	714-0364
		Black		
Suction safeguard piece, 1560 mm	1585 – 1595 mm	Silver	600-0103	714-0365
		Black		
Suction safeguard piece, 1612 mm	1637 – 1647 mm	Silver	600-0051	714-0373
		Black	600-0052	714-0374
Suction safeguard piece, 1623 mm	1648 – 1658 mm	Silver	600-0091	714-0353
		Black	600-0092	714-0354
Suction safeguard piece, 1634 mm	1659 – 1669 mm	Silver	600-0104	714-0366
		Black	600-0053	714-0369
Suction safeguard piece, 1645 mm	1670 – 1680 mm	Silver	600-0054	714-0376
		Black	600-0106	714-0368
Suction safeguard piece, 1943 mm	1968 - 1978 mm	Silver		
		Black	600-0055	714-0377

*Further lengths are readily available on request.

4. Kappa Rubber pieces

Description



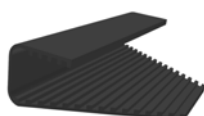
Edge protection rubber

As edge protection/sealing for the upper end of the laminates

	For module thickness	Single part
Edge protection rubber 4-6 mm	4-6 mm	809-0079
Edge protection rubber 6-8 mm	6-8mm	809-0083
Edge protection rubber 8-10 mm*	8-10mm	809-0062

Hook insert

As insert for the module hooks



	For module thickness	Single part
Hook insert inside dimension 4 mm	4-6 mm	809-0060
Hook insert inside dimension 6 mm	6-8 mm	809-0077
Hook insert inside dimension 8 mm	8-10mm	809-0078

EPDM 40x20x1 mm

For use with sarking under roofing screws 4.5x35 mm to guarantee water-tightness

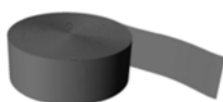


- | Self-adhesive
- | 1 EPDM piece for each screw

	Set of 50
EPDM 40x20x1 mm	720-0802

EPDM 20x1 mm

To seal the blank verso of suction safeguard pieces



- | Self-adhesive
- | Rolls of 10m
- | To install underneath the blank suction safeguard piece, along the full length of the piece, both on the left and right sides

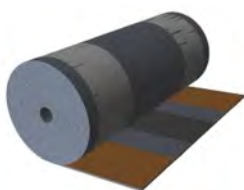
	M per roll	Single part
EPDM 20x1	10.00	809-0088

5. Kappa Sealing strips

Description

MetallRoll

Ensuring a watertight transition between module field and the tiles below

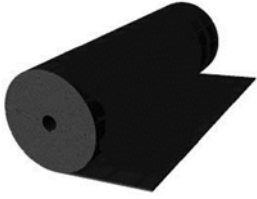


- | 2 adhesive strips (Butyl strip)
- | Pleated strips of aluminum, color coated with acrylic paint

	m per roll	Single part
MetallRoll, 320 mm, red	10.00	814-0309
MetallRoll, 320 mm, black	10.00	814-0316

Perform

Ensuring a watertight transition between module field and the tiles below



- | Suitable for high roof tiles which require a wider sealing strip
- | Expanded metal mesh made of aluminum, connected to a rubber polymer

	m per roll	Single part
Perform, 465 mm, red	4.00	814-0317
Perform, 465 mm, black	4.00	814-0318
Perform, 465 mm, grey	4.00	814-0319
Perform, 465 mm, brown	4.00	814-0320

Glue for Perform

Fixing the Perform on the tiles below



	Single part
Glue for Perform, 290ml	814-0322

Hammer for Perform

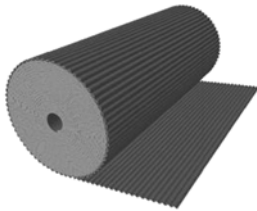
Facilitating the molding of the Perform strip to the tiles below



	Single part
Hammer for Perform	814-0324

Pleated lead strip

Ensuring a watertight transition between module field and the tiles below



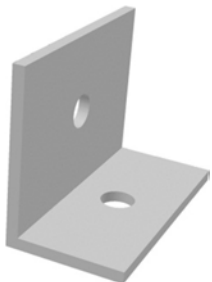
	m per roll	Single part
Pleated lead strip, 250 mm	8.25	814-0303
Pleated lead strip, 450 mm	4.40	814-0304

6. Kappa Miscellaneous

Description

Centre support bracket

Mid-support for the Module support profiles



- | Aluminium (EN AW 6063 T66)

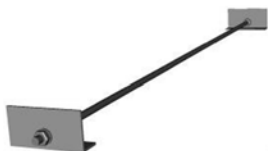
Per KMSP, 2 centre support brackets are used. For correct installation, the following additional material is necessary:

- | 1 drilling screw 4.2 x 16
- | 1 roofing screw 4.5 x 35

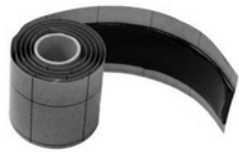







	Single part
Centre support bracket 30x20x2	601-0100

Spacer gauge

Spacing to the millimetre the exact distance between eaves parts



	Single part
Spacer gauge Kappa 1.0 m	712-0001
Spacer gauge Kappa 1.2 m	712-0084

	<p>Butyl strip Sealing for horizontal overlaps of top flashings and striation connectors, additional sealing of vertical overlaps of the flashings</p>	Single part
	Butyl strip 20x1.5x500 mm, black	814-0323
	<p>Tree-foam profile filler Lining the upper tiles (optional)</p>	Single part
	Tree-foam profile filler 795 mm	809-0050
	<p>Triangular foam filler Lining the tiles adjoining the module field – (optional) Additional security against leakage at the bottom of the module field (optional)</p>	Single part
	<ul style="list-style-type: none"> Self-adhesive Height: 60mm 	
	Triangular foam filler 1m	814-0310
	<p>Compression strip Lining the tiles adjoining the module field – optional:</p>	Single part
	Compression strip 4 m	153-0011
	<p>Comb for insect protection Insect protection and ventilation at the bottom of the module field (optional)</p>	Single part
	Comb for insect protection 1005 mm	814-0321
	<p>Fixing clip Fixing flashings indirectly, without penetration</p>	
	For correct installation, the following additional material is necessary:	
	<ul style="list-style-type: none"> 1 roofing screw 4.5 x 35 mm 	
	Fixing clip	Set of 50 720-0701
	<p>Sealing cap Sealing the ends of the topmost support profiles</p>	Single part
	Sealing cap	814-0337
	<p>Roofing screws 4.5x35 mm with 15 mm washer For the fixation of eaves parts, profiles, center support and fixing clips</p>	Set of 50
	Roofing screw 4.5 x 35 mm with 15 mm washer	720-0606



Roofing screws 4.5x45 mm with 15 mm washer

For the fixation of the KMSP 350; 9mm, i.e. the bottom-row mid-support for KPV modules.

	Set of 30
Roofing screw 4.5 x 45 mm with 15 mm washer	720-0526



Drilling screw 4.2x16 A2

For the connection of module support profile and center support bracket, as well as for the additional fixation of the inner lateral flashing standard version

	Set of 50
Drilling screw 4.2x16 A2	720-0865



Sheet metal screw H 4.2 mm 7983 A2

For the fixation of the suction safeguard

	For module thickness		Set of 50
Sheet metal screw H 4.2x22 7983 A2	4-6mm	Silver	720-0864
		Black	720-0964
Sheet metal screw H 4.2x25 7983 A2	6-10mm	Silver	720-0961
		Black	720-0962

Styrofoam shim

Solid support to guarantee watertight transitions between top flashings or corner flashings, and mid-support for top flashing.



Styrofoam
Width: 50 cm

	Single part
Styrofoam shim 16°	814-0374
Styrofoam shim 30°	814-0375



S.A.R.L CAPENERGIE
Mas d'alhem - 34150 - La Boissière - France
Tél : 04 67 56 77 91 - Fax : 04 67 55 52 25
E-Mail : info@capenergie.fr
www.capenergie.fr