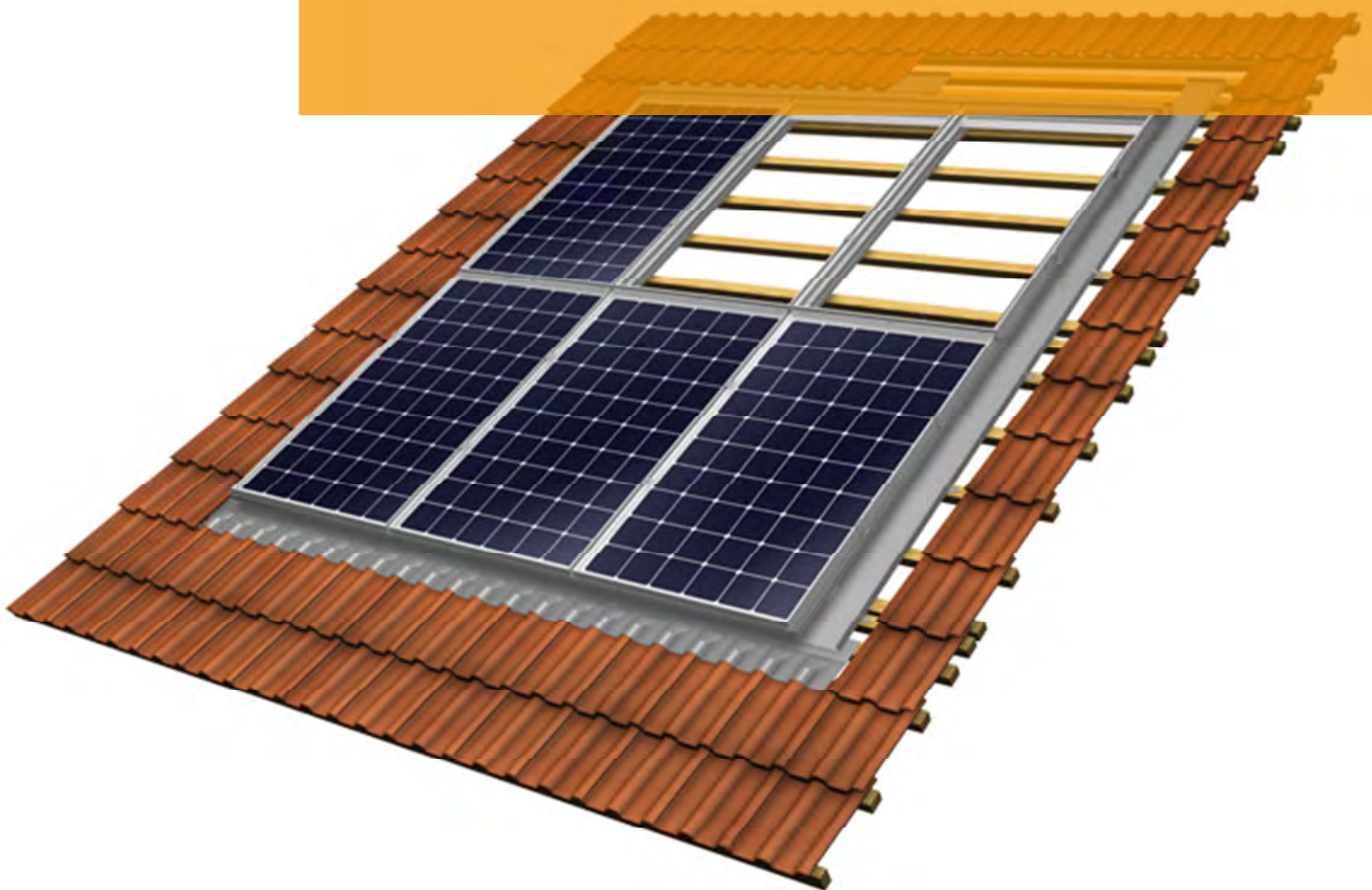




In-roof system Zeta
Product catalogue



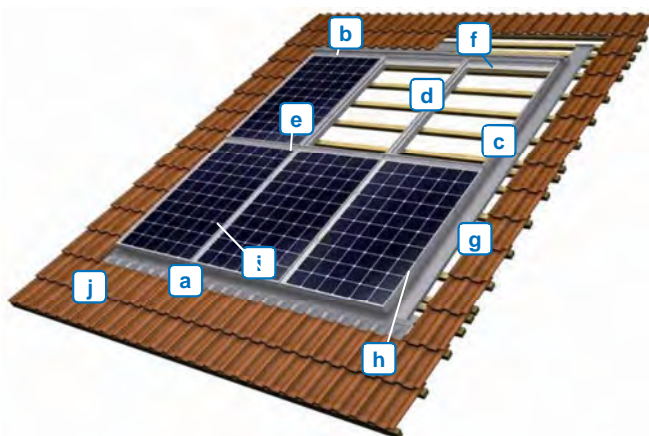
Contents

Zeta.....	3
1. Zeta module support profiles (ZMSP)	4
2. Zeta eaves and ridge parts	5
3. Zeta horizontal closure and sealing profiles	5
4. Zeta Flashings	7
5. Zeta module clamps	9
6. Zeta Sealing strips.....	10
7. Zeta Miscellaneous.....	11

In general::

- | For all business transactions, Mounting Systems GmbH's "General terms and conditions are valid, as well as any items negotiated and confirmed for a specific transaction.
 - | Through the publishing of this catalogue, all former catalogues become invalid.
 - | All information in this document may be subject to alterations.
-

Zeta



Components

- a.** Sealing strip (e.g. Perform)
- b.** Top flashing
- c.** Module support profile side
- d.** Module support profile center
- e.** Horizontal sealing profile
- f.** Inner flashing
- g.** Lateral flashing
- h.** Module end clamp
- i.** Inter-module clamp
- j.** Not depicted: eaves and ridge parts, bottom flashing, horizontal closure profile)

Notes

- | Zeta is ordered **piece by piece**.
- | For this system, we have put together **documentation** for your convenience. We can provide technical data sheets and installation manuals in English, French, Italian and German.
- | **Delivery time:** Goods issue ex works within 5 days after receipt of written order.
- | For any inquiry concerning the in-roof Zeta, please contact sales@mounting-systems.de.

1. Zeta module support profiles (ZMSP)

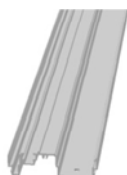
- | Aluminium (EN AW 6063 T66)
- | Black versions anodized: E6, C35 15my
- | Fixation of the ZMSPs: 1 or 2 roofing screws 6x50 mm (for side or centre profiles) are necessary.

Description



Module support profile centre

Vertical support for two modules



Module support profile lateral

Vertical support for one module at the edges of the PV field

For module lengths			Single part	
			centre	lateral
917 – 966 mm	ZMSP 1086 mm	Silver	615-0069	615-0080
		Black	615-0091	615-0102
967 – 1016 mm	ZMSP 1136 mm	Silver	615-0145	615-0147
		Black	615-0146	615-0148
1167 – 1216 mm	ZMSP 1336 mm	Silver	615-0117	615-0119
		Black	615-0118	615-0120
1217 – 1266 mm	ZMSP 1386 mm	Silver	615-0149	615-0151
		Black	615-0150	615-0152
1267 – 1316 mm	ZMSP 1435 mm	Silver	615-0068	615-0079
		Black	615-0090	615-0101
1317 – 1366 mm	ZMSP 1486 mm	Silver	615-0070	615-0081
		Black	615-0092	615-0103
1417 – 1466 mm	ZMSP 1586 mm	Silver	615-0071	615-0082
		Black	615-0093	615-0104
1467 – 1516 mm	ZMSP 1636 mm	Silver	615-0072	615-0083
		Black	615-0094	615-0105
1517 – 1566 mm	ZMSP 1686 mm	Silver	615-0073	615-0084
		Black	615-0095	615-0106
1567 – 1616 mm	ZMSP 1736 mm	Silver	615-0074	615-0085
		Black	615-0096	615-0107
1617 – 1666 mm	ZMSP 1786 mm	Silver	615-0075	615-0086
		Black	615-0097	615-0108
1667 – 1716 mm	ZMSP 1836 mm	Silver	615-0153	615-0155
		Black	615-0154	615-0156
1767 – 1816 mm	ZMSP 1936 mm	Silver	615-0076	615-0087
		Black	615-0098	615-0109
1917 – 1966 mm	ZMSP 2086 mm	Silver	615-0077	615-0088
		Black	615-0099	615-0110
1967 – 2016 mm	ZMSP 2136 mm	Silver	615-0189	615-0190
		Black		

2. Zeta eaves and ridge parts

- | Aluminium (EN AW 6063 T66)
- | Black versions anodized: E6, C35 15my

Description

Eaves and ridge part centre

Base fixation for the lowest row of centre module support profiles and for the conclusion of the topmost row of centre module support profiles



- | Fixation eaves part centre to profiles: 2 roofing screws 6 x 50 mm (see below)
- | Fixation ridge part centre to profiles: 1 Allen bolt M8x16 and 1 rectangular nut M8

Eaves and ridge part center 60 mm	Single part	
	Silver	600-0062
	Black	600-0084

Eaves and ridge part side

Base fixation for the lowest rows of left and right module support profiles and for the conclusion of the topmost rows of left and right module support profiles



- | Fixation eaves part side to profiles: 1 roofing screw 6 x 50 mm (see below)
- | Fixation ridge part side to profiles: 1 Allen bolt M8x16 and 1 rectangular nut M8

Eaves and ridge part side 60 mm	Single part	
	Silver	600-0063
	Black	600-0083

3. Zeta horizontal closure and sealing profiles

- | Aluminium (EN AW 6063 T66)

Top cover joiner

Connection of horizontal closure profiles



- | Fixation each top cover joiner: 1 Allen bolt M8x16 and 1 rectangular nut M8

Top cover joiner 300 mm	Single part	
	600-0059	

Description

Horizontal closure profile

Horizontal support for the top flashing



- | Fixation horizontal closure profiles: 2 top cover joiners 300 mm with appropriate bolts and nuts
- | The horizontal closure profiles are to be inserted in the top cover joiner

Module widths	Length of horizontal closure profile	Single part
570 – 789 mm	Horizontal closure profile 570 mm	600-0057
790 – 1009 mm	Horizontal closure profile 790 mm	600-0060
1010 – 1249 mm	Horizontal closure profile 1010 mm	600-0058
1250 – 1469 mm	Horizontal closure profile 1250 mm	600-0061

Horizontal sealing profile

Horizontal sealing between the modules

- | Pre-assembled with: 2 EPDM strips (at the back side and below the profile)

Fixation horizontal sealing profile:

- | Profile nuts (quantity depending on profile length)
- | Allen bolts M8x35 or M8x45 (depending frame height of the module, quantity depending on profile length)



Module widths	Length of sealing profile	Single part	
		Color	Part Number
631 – 650 mm	Horizontal sealing profile, 631mm	Silver	715-0076
		Black	715-0088
771 – 790 mm	Horizontal sealing profile, 771 mm	Silver	715-0077
		Black	715-0089
791 – 810 mm	Horizontal sealing profile, 791 mm	Silver	715-0078
		Black	715-0090
851 – 870 mm	Horizontal sealing profile, 851 mm	Silver	715-0079
		Black	715-0091
951 – 970 mm	Horizontal sealing profile, 951 mm	Silver	715-0080
		Black	715-0092
971 – 990 mm	Horizontal sealing profile, 971 mm	Silver	715-0081
		Black	715-0093
986 – 1005 mm	Horizontal sealing profile, 986 mm	Silver	715-0074
		Black	715-0086
991 – 1010 mm	Horizontal sealing profile, 991 mm	Silver	715-0082
		Black	715-0094
1031 – 1050 mm	Horizontal sealing profile, 1031 mm	Silver	715-0083
		Black	715-0095
1071 – 1090 mm	Horizontal sealing profile, 1071 mm	Silver	715-0084
		Black	715-0096
1331 – 1350 mm	Horizontal sealing profile, 1331 mm	Silver	715-0085
		Black	715-0097
1335 - 1344 mm	Horizontal sealing profile, 1335 mm	Silver	715-0075
		Black	715-0087

4. Zeta Flashings

Aluminium (EN AW 5005)
Black versions black two-pack paint

Description

Top flashing

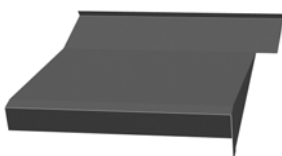
For a smooth transition between module field and the tiles above



	Single part	
Top flashing 16°, 2 m	Silver	801-0097
	Black	801-0122
Top flashing 30°, 2 m	Silver	801-0098
	Black	801-0125

Corner flashing

For a smooth transition between the corner of the module field and the tiles above



	Single part	
Corner flashing 16°, right	Silver	801-0095
	Black	801-0124
Corner flashing 16°, left	Silver	801-0096
	Black	801-0123
Corner flashing 30°, right	Silver	801-0094
	Black	801-0127
Corner flashing 30°, left	Silver	801-0093
	Black	801-0126

Striation Connector

For a safe transition between top flashings or corner flashings



	Single part	
Striation connector 16°		801-0109
Striation connector 30°		801-0110

Bottom flashing

For a prolongation of the sealing strip underneath the modules



Upstand on one side

	Single part	
Bottom flashing, 2 m	Silver	801-0069
	Black	

Description
Lateral flashing

For a smooth transition between module field and the tiles on either side



| Upstand on both sides

Lateral flashing, 2 m	Single part	
	Silver	801-0107
Black	801-0121	

Mid-flashing

For a watertight inner transition in non-rectangular configurations



| Upstand on both sides

Mid-flashing, 2 m	Single part	
	Silver	801-0067
Black	801-0086	

Inner flashing

Horizontal flashing between the modules to lead any water leaking into the support profiles



Module widths	Length	Single part
625 – 640 mm	Inner flashing, 539 mm	801-0150
640 – 655 mm	Inner flashing, 554 mm	801-0151
790 – 805 mm	Inner flashing, 704 mm	801-0134
806 – 821 mm	Inner flashing, 720 mm	801-0135
851 – 866 mm	Inner flashing, 765 mm	801-0136
941 – 956 mm	Inner flashing, 855 mm	801-0137
986 – 1001 mm	Inner flashing, 900 mm	801-0068
1002 – 1017 mm	Inner flashing, 916 mm	801-0075
1076 – 1091 mm	Inner flashing, 990 mm	801-0138
1122 – 1137 mm	Inner flashing, 1036 mm	801-0079
1335 – 1350 mm	Inner flashing, 1249 mm	801-0072

Wind skirt

Wind protection at the bottom of the PV field



Wind skirt 2m, 30 mm height	Single part	
	Silver	801-0129
Black	801-0139	

5. Zeta module clamps

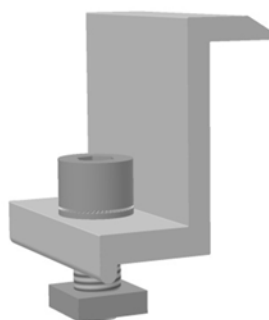
Description

Module end clamp

Fixation of a single module to the underlying support profile

Incl. small parts (pre-assembled):

- | 1 End clamp profile, Aluminium (EN AW 6063 T66)
- | 1 Stainless steel Allen bolt M8x20
- | 1 Lock washer 8 A2
- | 1 Rectangular nut M8



	Single part	
Module end clamp 33 mm	Silver	702-0142
	Black	702-0153
Module end clamp 35 mm	Silver	702-0143
	Black	702-0154
Module end clamp 38 mm	Silver	702-0144
	Black	702-0155
Module end clamp 40 mm	Silver	702-0145
	Black	702-0156
Module end clamp 42 mm	Silver	702-0146
	Black	702-0157
Module end clamp 45 mm	Silver	702-0148
	Black	702-0159
Module end clamp 46 mm	Silver	702-0147
	Black	702-0158
Module end clamp 50 mm	Silver	702-0149
	Black	702-0160

Inter-Module clamp

Fixation of two modules to the underlying support profile

Incl. small parts (pre-assembled):

- | 1 Inter-Module clamp, Aluminium (EN AW 6063 T66)
- | 1 Stainless steel Allen bolt M8
- | 1 Lock washer 8 A2
- | 1 Rectangular nut M8



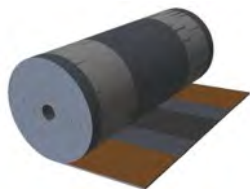
	Single part	
Inter-module clamp 30-34 mm with M8x35 mm	Silver	700-0063
	Black	700-0068
Inter-module clamp 35-39 mm with M8x40 mm	Silver	700-0064
	Black	700-0069
Inter-module clamp 40-44 mm with M8x45 mm	Silver	700-0065
	Black	700-0070
Inter-module clamp 45-49 mm with M8x50 mm	Silver	700-0066
	Black	700-0071
Inter-module clamp 50-54 mm with M8x55 mm	Silver	700-0067
	Black	700-0072

6. Zeta Sealing strips

Description

MetallRoll

Ensuring a watertight transition between module field and the tiles below

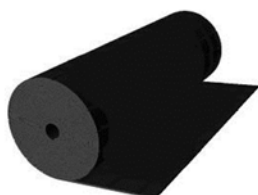


| 2 adhesive strips (Butyl strip)

	m per roll	Single part
MetallRoll, 320 mm, red	10.00	814-0309
MetallRoll, 320 mm, black	10.00	814-0316

Perform

Ensuring a watertight transition between module field and the tiles below



| Suitable for high roof tiles which require a wider sealing strip

	m per roll	Single part
Perform, 465 mm, red	4.00	814-0317
Perform, 465 mm, black	4.00	814-0318
Perform, 465 mm, grey	4.00	814-0319
Perform, 465 mm, brown	4.00	814-0320

Adhesives for Perform

Fixing the Perform on the tiles below



	Single part
Adhesives for Perform, 290 ml	814-0322

Hammer for Perform

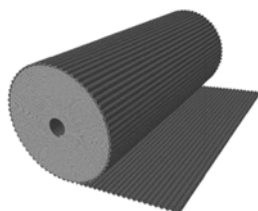
Fixing the Perform on the roof substructure



	Single part
Hammer for Perform	814-0324

Pleated lead strip

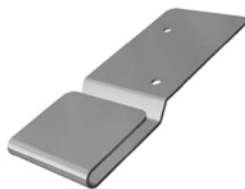
Ensuring a watertight transition between module field and the tiles below



	m per roll	Single part
Pleated lead strip, 250 mm	8.25	814-0303
Pleated lead strip, 450 mm	4.40	814-0304

7. Zeta Miscellaneous

Description



Retaining clip

Indirect fixation of the bottom, top and lateral flashings

Fixation: 1 roofing screw 4.5 x 25 mm (see below)

Retaining clip

Set of 50

720-0701



Slip safeguard

Installation aid for the bottom row of modules

The slip safeguard is fixed to the bottom module support profiles and contains:

Anti-slip bracket centre

Lateral anti-slip bracket

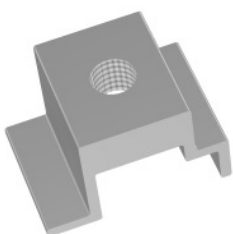
Drilling screws 4.2x16 A2 (2 per module support profile centre, 1 per lateral module support profile)



Slip safeguard

For 10 modules

720-0960



Profile nut

An intelligent nut to fasten both the sealing profiles and the inner flashings to the adjacent modules

Aluminium (EN AW 6063 T66)

Used with Allen bolts M8

Profile nut

Set of 50

720-0696



Tree-foam profile filler

Lining the upper tiles – optional

Tree-foam profile filler 795 mm

Single part

809-0050

Description
Triangular foam filler

Lining the tiles adjoining the module field – optional

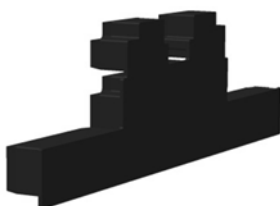


| Self-adhesive

Adhesive seal 1000 mm, taper height 60 mm	Single part
	814-0310

End-cap center

Sealing the top ends of the support profiles center

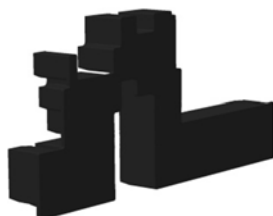


| Polyethylen

End-cap center	Single part
	814-0349

End-cap lateral

Sealing the top ends of the support profiles side (left and right)

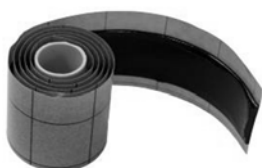


| Polyethylen

End-cap lateral left	Single part
End-cap lateral right	814-0350
	814-0351

Butyl strip

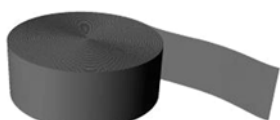
Additional sealing of vertical overlaps of the flashings – optional



Butyl strip 20x1.5x500 mm, black	Single part
	814-0323

Double-sided adhesive tape

Fixation for the tree-foam filler – optional



Double-sided adhesive tape, 15 mm	m per roll	Single part
	5.00	809-0053

Compression strip

Lining the tiles adjoining the module field – optional:



Compression strip 4 m	Single part
	153-0011

Description

Allen bolt w. narrow head M8 DIN 912 A2-70

For the fixation of inner flashings and horizontal sealing profiles



| Stainless steel

	Set of 50	
Allen bolt pan head, M8x35 For module frames < 42 mm	Silver	720-0698
	Black	720-0700
Allen bolt pan head, M8x45 For module frames ≥ 42 mm	Silver	720-0697
	Black	720-0699

Drilling screw 4.2x16 A2

For the fixation of anti-slip bracket center and side



	Single part
Drilling screw 4.2x16 A2	806-0012

Roofing screw 6x50 mm with washer, self drilling

Fixing the support profiles and eaves parts



| Stainless steel

	Set of 50
Roofing screw 6x50 mm with washer	720-0801

Roofing screw 4.5x25 mm with 15 mm washer A2, self drilling

Fixing the flashings and wind skirt



| Stainless steel

	Set of 50	
Roofing screw 4.5x25 mm with 15 mm washer A2	Silver	720-0866
	Black	720-0800

Fixation upper profile closure

For the fixation of the ridge parts, containing:



| Rectangular nut M8 (2 per ridge part), A2
| Allen bolt M8 x 16 (2 per ridge part), A2

	For 10 modules
Fixation upper profile closure	720-0963

Description

Styrofoam shim

Solid support to guarantee watertight transitions between top flashings or corner flashings.



- | Styrofoam
- | Width: 50 cm

	Single part
Styrofoam shim 16°	814-0371
Styrofoam shim 30°	814-0372

EPDM 40x20x1 mm

For use with sarking under roofing screws 4.5x25 mm and 6x50 mm to guarantee tightness



- | Self-adhesive
- | 1 EPDM piece for each screw

	Set of 50
EPDM 40x20x1 mm	720-0802



S.A.R.L CAPENERGIE
Mas d'alhem - 34150 - La Boissière - France
Tél : 04 67 56 77 91 - Fax : 04 67 55 52 25
E-Mail : info@capenergie.fr
www.capenergie.fr