

EVlink Smart Wallbox

In short



Product QR code
'FLASH ME'



Cloud-connectable



Ethernet



Schneider Electric supports OCPP and is an active member of OCA (Open Charge Alliance).

Extensive choice

Charging station offer:

- Maximum charging power: 7.4 kW or 22 kW with a single-phase or three-phase power supply
- Maximum charging current can be adjusted from 8 A to 32 A
- T2 socket outlet with or without shutter
- T2 socket outlet with shutters + type E domestic socket outlet
- Attached cable with T1 or T2 connector
- Key locking or RFID user authentication

Charging station QR Code

- To get the product datasheet or to join Customer Care Center with "mySchneider" app, flash the QR Code with your usual QR Code reader.
- To access cloud-based EcoStruxure™ Facility Expert app maintenance organizer: charging station registration, maintenance reports, (see page 31)

Robustness

- Heavy duty socket outlet with silver plated contacts avoiding overheating
- High protection against mechanical impacts: IK10
- Suitable for outdoor use: IP54

Easy to install and commission

- Wall mounting or floor standing
- 1 or 2 charging stations on the same pole
- Easy wiring
- Integrated measuring of the apparent power
- Interface with an external MID energy meter
- Parameters setting through a web server embedded in the charging station

Energy management

- Delayed charging locally controlled by a wired contact to postpone charging to off-peak hours
- Temporary current limitation to a set value, controlled by a wired contact, to reduce the overall facility consumption and reduce the risk of power outage.
- Delayed charging and current limitation can also be controlled by the EV Load Management System, the supervision (over OCPP) or by the building management system (over Modbus)

Versatile connection to a supervision

- Wired Ethernet: 3 ports
- 3G/4G modem as an accessory
- OCPP 1.5 or OCPP 1.6 interface

Services offer

- Worldwide network of certified installers providing on-site installation, on-site commissioning, maintenance plan and on-demand repair and asset management contracts
- Worldwide customer care center

Optimized architecture

- Standalone or clustered architecture
- Connected or not to a supervision (through OCPP 1.5 or OCPP 1.6 communication protocols).

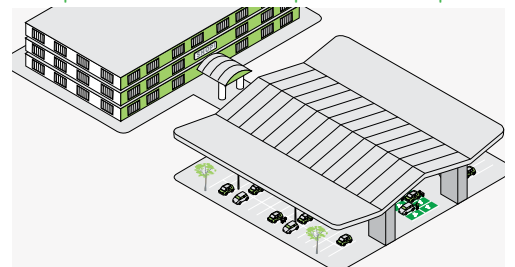
Fleet car at home



Condominium



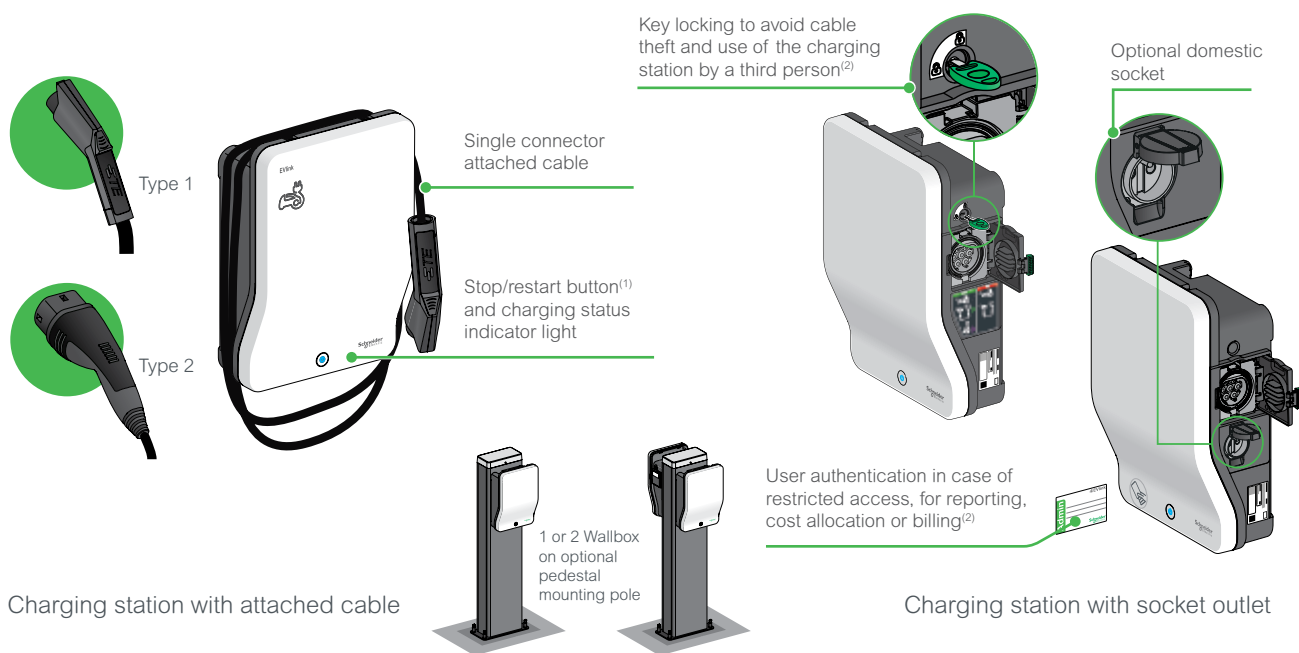
Corporate and semi-public car parks



Application

Smart Wallbox is recommended for all private and semi-public areas whenever there are needs of user authentication, charging sessions monitoring or charging assets management.

Discovery



⁽¹⁾: also available with EVlink Smart Wallbox with attached cable.

⁽²⁾: function can be deactivated with commissioning tool.

Easy to install and commission

Installation by a single technician in less than 30 minutes; no special tools required

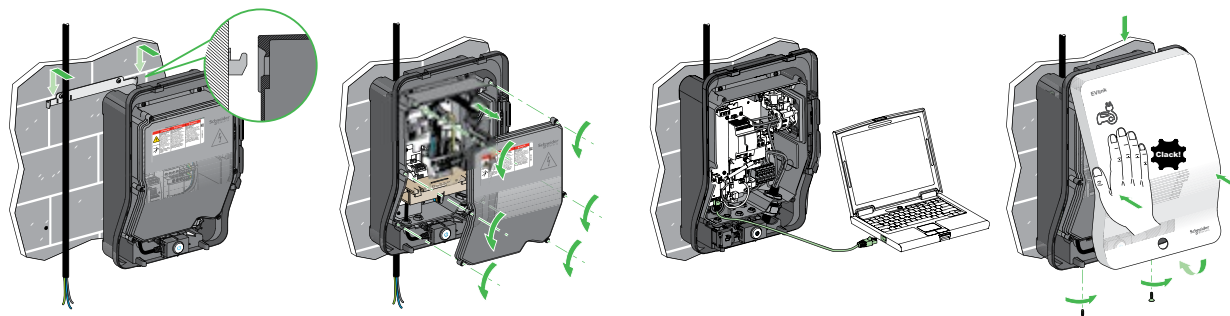
Top, bottom or back side wiring

Easy commissioning with a laptop connected to the embedded webserver

What's inside an EVlink Smart Wallbox



Scan or click on QR code



For example, you can:

- configure RFID badges. All RFID badges are accepted by default (factory setting)
- amend the maximum current values per socket
- activate the functions: load shedding
- produce maintenance reports
- set up access to supervision
- ...

EVlink Smart Wallbox

Characteristics



Z.E. READY



> RoHS compliant
> Reach compliant
> EoL: End Of Life Process
> Product Environmental Profile compliant

Certification

EVlink Smart Wallbox has obtained the CB test certificate issued by the LCIE test laboratory, establishing compliance with the IEC 61851-1 and IEC 61851-22 standards.

Power supply

- Smart Wallbox can be supplied either in single-phase or in three-phase
- 220-240 V single-phase - 50/60 Hz
- 380-415 V three-phase - 50/60 Hz

Rated charging current

- T2/T2S socket-outlet: 8 A to 32 A (factory setting 32 A)
- TE socket-outlet: 10 A

Power consumption

- Power consumption of each conditional input (limitation and deferred start): 5 mA 24 V DC

Diagram of the earthing system

- TT, TN-S, TN-C-S
- IT (may require the addition of an isolating transformer for charging of certain vehicles)

Mechanical and environmental characteristics

- Ingress protection code: IP54
- Impact protection code: IK10
- Operating temperature: -30°C to +50°C
- Storage temperature: -40°C to +80°C
- Attached cable length: 4.5 m

Charging access

- Key locking
 - User authentication through a RFID badge. Remote authentication by supervision or local setting of authorized badges
 - 13.56 MHz RFID reader for badges with chips Mifare Ultralight, Mifare Classic 1K / 4K, I Code SLI, Tag-it HFI, EM4135 ... (under ISO/IEC 14443 A&B, ISO/IEC 15693 protocols)
- Notes: RFID badges available on the market and standard are modified very often, so we advice to carry out prior test on our charging station to check compatibility
- 10 RFID badges provided with every RFID-type charging station

Warranty

- 24 months for the entire EVlink range

Standards

- IEC/EN 61851-1 ed 2.0
- IEC/EN 61851-22 ed 1.0
- IEC/EN 62196-1 ed 2.0
- IEC/EN 62196-2 ed 1.0

Connectivity

- Wired Ethernet: 3 ports
 - Port 1: LAN
 - Port 2: 3G/4G
 - Port 3: connection to PC for commissioning
- 3G/4G modem as an accessory
- OCPP 1.5 or OCPP 1.6 interface

Energy metering

- Integrated measuring of the apparent power
- Interface with an external MID energy meter

Commissioning

- Parameters setting through a web server embedded in the charging station.

Charging station references

➤ EVlink Smart Wallbox



Description	Socket outlet or connector type	Charging access	Power (kW) ⁽¹⁾ Phases	References
With socket outlet on right side - Silver plated contacts				
T2		Key	7.4 (1P) / 22 (3P)	EVB1A22P2KI
		RFID ⁽²⁾	7.4 (1P) / 22 (3P)	EVB1A22P2RI
T2 with shutter		Key	7.4 (1P) / 22 (3P)	EVB1A22P4KI
		RFID ⁽²⁾	7.4 (1P) / 22 (3P)	EVB1A22P4RI
T2 with shutter and TE (domestic)		Key	7.4 (1P) / 22 (3P)	EVB1A22P4EKI
		RFID ⁽²⁾	7.4 (1P) / 22 (3P)	EVB1A22P4ERI
With attached cable 4.5 m, on right side - Silver plated contacts				
T1		Key	7.4 (1P)	EVB1A7PAKI
		RFID ⁽²⁾	7.4 (1P)	EVB1A7PARI
T2		Key	7.4 (1P)	EVB1A7PCKI
		RFID ⁽²⁾	7.4 (1P)	EVB1A7PCRI
T2		Key	22 (3P)	EVB1A22PCKI
		RFID ⁽²⁾	22 (3P)	EVB1A22PCRI

⁽¹⁾ Factory setting: 32 A - and all RFID badges validated.

Can be replaced by customer setting (16 A, list of RFID badges...) using a PC via embedded webserver (see commissioning guide DOCA0060).

⁽²⁾ Includes 10 RFID badges.

➤ Protective devices and optional equipment

New installation: supply line and protection devices must be defined for the highest power setting.

Description			
Charging		Single-phase	Three-phase
Rated Power - Current		7.4 kW - 32 A ⁽⁴⁾	22 kW - 32 A ⁽⁴⁾
Protection			
Circuit breaker (overcurrent) ⁽¹⁾		40 A Curve C	40 A Curve C
RCD (residual current) ⁽¹⁾		30 mA B Type for EV ⁽²⁾ : A9Z51240	30 mA B Type for EV: A9Z51440
		30 mA B-SI Type ⁽²⁾ : A9Z61240	30 mA B-SI type for EV: A9Z61440
Under voltage tripping auxiliary	with iC60	A9A26969 ⁽³⁾	A9A26969 ⁽³⁾
	with DT40	A9N26969 ⁽³⁾	A9N26969 ⁽³⁾
Deferred start			
Relay		With normally open contact ⁽⁵⁾	
Load-shedding			
Relay		With normally open contact ⁽⁵⁾	

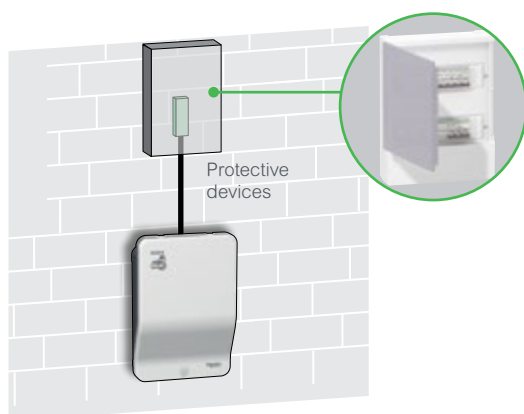
⁽¹⁾ References to be defined and local availability to be checked by Schneider Electric front offices.

⁽²⁾ In accordance with the electrical installation standard HD 60364-7-722:2016. Refer to local regulation.

⁽³⁾ Necessary to meet EV Ready requirements.

⁽⁴⁾ Without or with domestic socket.

⁽⁵⁾ Smart Wallbox setting can be changed to "normally closed" if necessary, with commissioning tool.



The charging station operates autonomously.
It has a dedicated protective device.

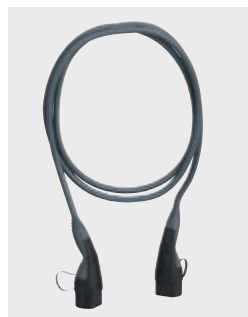
➤ Installation: by an electrician

➤ Location: residential, private usage

EVlink Smart Wallbox

Accessory references

EVlink Cable



Available with T1 or T2 connector.

Please refer to page 46

AC charging station testing tool



Enables operating check of the charging station and charging cable.
Reference: **EVA1SADS**

Pedestal mounting pole



Floor standing:
• for 1 Wallbox,
Reference **EVP2PBSSG1**
• for 2 Wallbox,
Reference **EVP2PBSSG2**
Available 4th quarter of 2020

Modem



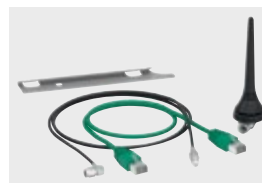
Modems to be mounted inside the Smart Wallbox.
3G/4G Modem
Reference: **EVP3MM**

Pack of 10 RFID badges



For charging stations equipped with an RFID reader.
The badges are supplied blank, ready to be programmed to identify an administrator or user.
Sheet of adhesive labels for badges: 1 administrator + 9 users.
Reference: **EVP1BNS**

Antenna for Smart Wallbox GPRS/3G/4G modem



Antenna must be ordered separately:
Ethernet cable 0.3 m included.
To be mounted inside the Smart Wallbox
Reference: **EVP2MX**

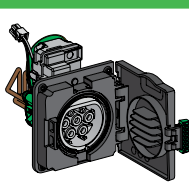
Spare part references

Front panel



Reference
EVP1HCWN

Socket outlet



References
T2S
T2
TE

Key lock



References
Key lock Random ⁽¹⁾
Key lock Single ⁽¹⁾

⁽¹⁾ Example:
- If you order one EVP1HLSR: you will receive 1 lock + 2 keys with same code.
- If you order one EVP1HLSS: you will receive 10 locks + 20 keys with same code for all keys.

Attached cable

T1 charging connector



References
32 A single-phase

T2 charging connector



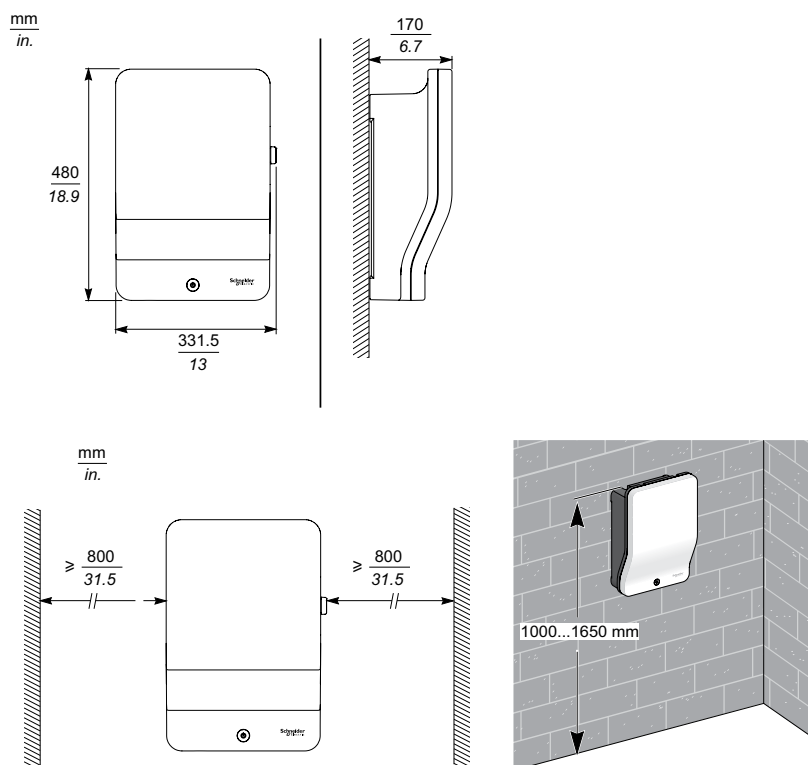
References
32 A single-phase



References
32 A three-phase

Practical information

➤ Dimensions (mm)



With socket outlets

- 6.2 kg (13.66 lb) - T2/T2S
- 6.6 kg (14.55 lb) - T2/T2S + TE

With attached cable

- 7.7 kg (15.43 lb) - 7.4 kW
- 8.3 kg (17.63 lb) - 22.1 kW

Additional information

Charging station technical document	Language	References
Installation Guide ⁽¹⁾ (model with socket outlet)	EN / FR / ES / IT	NHA95005
	DE / NL / NO / SV	NHA95006
Installation Guide ⁽¹⁾ (model with attached cable)	EN / FR / ES / IT	NHA95018
	DE / NL / NO / SV	NHA95021
User guide ⁽¹⁾	EN / FR / ES / IT	NHA95096
	DE / NL / NO / SV	NHA95097
Commissioning Guide ⁽²⁾ (standalone charging station)	FR	DOCA0060FR
	EN	DOCA0060EN

⁽¹⁾ Delivered with the product.

⁽²⁾ To be downloaded.

To download the above documents, do a search by reference on www.se.com

EcoStruxure™ Facility Expert

Register your charging station and improve your maintenance efficiency now with EcoStruxure™ Facility Expert.

- EcoStruxure™ Facility Expert is a simple, cloud-based tool that helps you organize maintenance records, follow-up on preventive maintenance, access log histories, create reports, and integrate remote alarming from your equipment.
- Let EcoStruxure™ Facility Expert help you optimize your maintenance activities. Download it for free on your PC or for your smart device at the Apple or Google Play store.
- You are ready to flash the product QR code with the EcoStruxure™ Facility Expert reader.

