

PT1-PP-01



**SMALL WIND TURBINE TEST:
UD ENERGY SYSTEMS Pvt.Ltd.
Whisper 200 - 1kW**

**POWER PERFORMANCE MEASUREMENTS
IEC – 61400-12-1**

| | |
|---------------------------|----------------|
| Rajesh Katyal | (C-WET) |
| J.C. David Solomon | (C-WET) |
| Deepa Kurup | (C-WET) |

DECEMBER 2009

CENTRE FOR WIND ENERGY TECHNOLOGY

(An Autonomous R&D Institution under the Ministry of New and Renewable Energy, Government of India)
An ISO 9001:2000 Organisation

PT1-PP-01



**SMALL WIND TURBINE TEST:
UD ENERGY SYSTEMS Pvt.Ltd.
Whisper 200 - 1kW**

**POWER PERFORMANCE MEASUREMENTS
IEC - 61400-12-1**

| | |
|---------------------------|----------------|
| Rajesh Katyal | (C-WET) |
| J.C. David Solomon | (C-WET) |
| Deepa Kurup | (C-WET) |

DECEMBER 2009

CENTRE FOR WIND ENERGY TECHNOLOGY

(An Autonomous R&D Institution under the Ministry of New and Renewable Energy, Government of India)
An ISO 9001:2000 Organisation

6.7 Addendum:

Power Curve Measurement of Whisper 200, 1kW Small Wind Turbine (UD Energy Systems Pvt. Ltd.) for 48V configuration

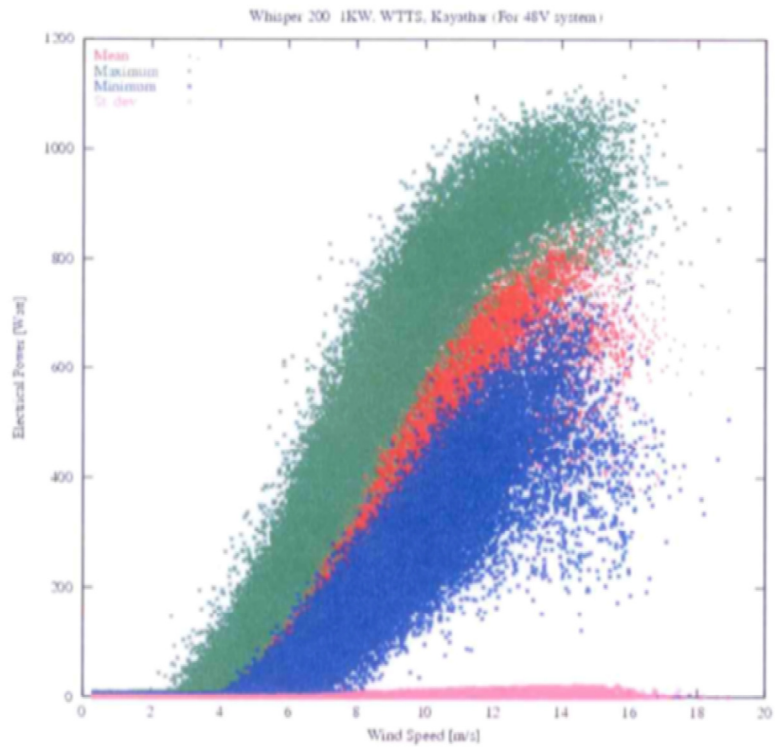


Figure 6.7.1: Electrical power scatter plot as a function of wind speed (data not corrected for air density variation)

Note: Instantaneous 1second peak 1132.962W has been recorded at 15.82m/s Wind Speed.