



Flat roof system Lambda Light
Product catalogue



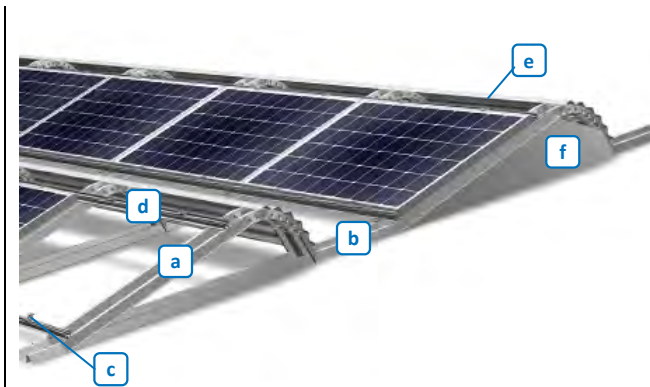
Contents

LAMBDA LIGHT	3
1. LAMBDA LIGHT - MAIN COMPONENTS	4
2. LAMBDA LIGHT - RAILS & MISCELLANEOUS	5
3. LAMBDA LIGHT - MODULE END CLAMPS.....	6
4. LAMBDA LIGHT - SMALL PARTS & MISCELLANEOUS.....	7

In general:

- | For all business transactions, Mounting Systems GmbH's "General terms and conditions" are valid, as well as any items negotiated and confirmed for a specific transaction.
 - | Through the publishing of this catalogue, all former catalogues become invalid.
 - | All information in this document may be subject to alterations.
-

Lambda Light



Komponenten

- a. Triangle
- b. Ground rail
- c. Module end clamp
- d. Module rail
- e. Back sheet metal
- f. Side sheet metal

Notes

- | Lambda is ordered **piece by piece**.
- | Using our **Lambda Light Calculation Tools**, you can easily verify the static soundness of your system, create a bill of materials and calculate your price.
- | For this system, we have put together a wide range of **documentation** for your convenience. We can provide technical data sheets and installation manuals in different languages. Please do not hesitate to ask for them (confer documents).
- | When requesting quotations, please use our form “**Technical Planning Aid**” (cf. documents) and mail it to sales@mounting-systems.de.
- | **Delivery time:**
 15° version for width modules: Installations to 500kW goods issue ex works within 3 days after receipt of written order. Installations over 500kW have goods issue ex works of 2-3 weeks after receipt of written order.
 15° for small modules & 10° version: After receiving the written order 6-7 weeks delivery time.

Sample order*:

Art.-No.	Description	Quantity
Sample order Lambda Light		
801-0149	Triangle Lambda Light	170
801-0142	Ground rail Lambda Light (2.1m)	170
704-0022	Clamp stone f. BR LQ pre-assembled	680
702-0168	EC LL RH 44-50mm; 60mm pre-assembled	600
800-0906	BR LQ 2400 mm	209
706-0035	Splice pre-assembled	209
801-0145	Back sheet metal oneway 1730mm	150
801-0143	Side sheet metal left Lambda Light	10
801-0144	Side sheet metal right Lambda Light	10
720-0947	Set: 50xJF3-2H 4,8x19 E14/2,0	1
720-0950	Set: 100xJF3-2H 4,8x19 E14/2,0	19
814-0353	Building protection mat standard 200x300x10	493

* Example: Module field with 10 rows à 15 modules, Module type Conergy PowerPlus (CPP 220), Module orientation landscape, pitch of the triangles 15°, installation type: long rail

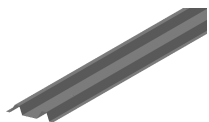
1. Lambda Light - Main components

Aluminium

Description

Ground rail

Ground part of the elevation with blankings for the adjustment of the triangle and the next ground rail



Aluminium (EN AW 3005 H14)

	Module width	Single part
Ground rail 15°, length: 2.1m	986 - 1047mm	801-0142
Ground rail A 15°, length: 1.725m	746 - 840mm (rail cl.) 785 - 835mm (corner cl.)	801-0189
Ground rail 10°, length: 1.8m	986 - 1047mm	801-0199

Triangle (pitch: 15°)

Top part of the elevation with blankings for the module fixation



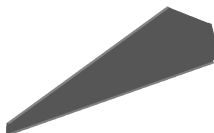
Aluminium (EN AW 3005 H14)
grains for the right setting of the screws

	Module width	Single part
Triangle 15°	986 - 1047mm	801-0149
Triangle A 15°	746 - 840mm (rail cl.) 785 - 835mm (corner cl.)	801-0192
Triangle 10°	986 - 1047mm	801-0198

Side sheet metal

For the protection against wind on the end of each row

Aluminium (EN AW 3005 H14)
Right and left type for the ending available

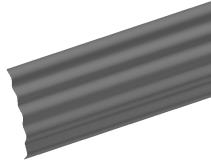


	Module width	Single part
Side sheet metal left 15°	986 - 1047mm	801-0143
Side sheet metal right 15°	986 - 1047mm	801-0144
Side sheet metal A left 15°	746 - 840mm (rail cl.) 785 - 835mm (corner cl.)	801-0190
Side sheet metal A right 15°	746 - 840mm (rail cl.) 785 - 835mm (corner cl.)	801-0190
Side sheet metal left 10°	986 - 1047mm	801-0200
Side sheet metal right 10°	986 - 1047mm	801-0201

Description

Back sheet metal

For the protection against wind behind the modules



- | Aluminium (EN AW 3005 H18)
- | 2 types available oneway and twotimes

	Single part
Back sheet metal 15° oneway; Length: 1.73m	801-0145
Back sheet metal 15° twotimes; Length: 3.475m	801-0146
Back sheet metal 10° oneway; Length: 1.73m	801-0202

Additional ballast support

Flashing for the ground rail for additional ballast



- | Aluminium (EN AW 1050A H16)

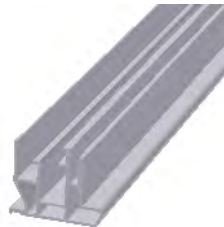
	Single Part
Additional ballast support	801-0065

2. Lambda Light - Rails & Miscellaneous

- | Aluminium (EN AW 6063 T66)

Description

Base Rail LQ



- | h/b = 39/49
- | Aluminium
- | 1.07 kg/m

Length	Single part
6,000 mm	800-0744
4,150 mm	800-0907
2,400 mm	800-0906
195 mm	600-0086

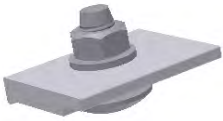
Splice for base rail LQ

For the connection of two base rails LQ



- | Aluminium
- | Incl. small parts (2 stainless steel Allen bolt M8, pre-assembled)
- | l = 80 mm

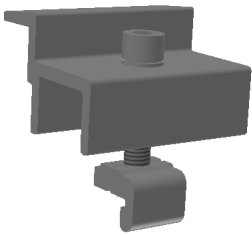
	Single part
Splice pre-assembled	706-0035

Description
Clamp stone for base rail LQ
For the fixation of the base rail to the triangle


Aluminium
Incl. small parts (1 carriage bolt – stainless steel M8 and washer, pre-assembled)

	Single part
Clamp stone for BR LQ pre-assembled	704-0022

3. Lambda Light - Module end clamps

Description
Module end clamp for rail installation
For the fixation of modules to the base rail for rail installation


Incl. small parts (pre-assembled):

- 1 module end clamp, Aluminium (EN AW 6063 T66)
- 1 Stainless steel Allen bolt M8
- 1 Stainless steel lock washer 8 mm
- 1 Quickstone, Aluminium (EN AW 6063 T66)

Clamping range	Single part	Sets 20 Pcs
Frame 30-36mm, 60mm	702-0163	720-0965
Frame 37-43mm, 60mm	702-0167	720-0967
Frame 44-50mm, 60mm	702-0168	720-0968

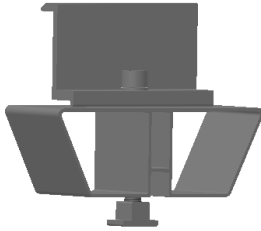
Description

Module end clamp for corner clamping

For the fixation of modules to the base rail for corner clamping

Incl. small parts (pre-assembled):

- 1 module end clamp, Aluminium (EN AW 6063 T66)
- 1 corner holder lower part (EN AW 6063 T66)
- 1 Stainless steel Allen bolt M8
- 1 Stainless steel lock washer 8 mm
- 1 Quickstone, Aluminium (EN AW 6063 T66)



	Single part
Frame 33 mm	702-0175
Frame 34 mm	702-0170
Frame 35 mm	702-0174
Frame 38 mm	702-0171
Frame 40 mm	702-0176
Frame 42 mm	702-0172
Frame 43 mm	702-0173
Frame 45 mm	702-0177
Frame 46 mm	702-0161
Frame 50 mm	702-0169

4. Lambda Light - Small parts & Miscellaneous

Description

Screw

For the fixation of the triangle to the ground rail as well as the flashings to the system



- Stainless steel

	Single part	Sets	
		50 Pcs	100 Pcs
JF3-2H 4,8x19 E14/2,0	806-0269	720-0947	720-0950

Building protection mat

Layer for the protection of the roof surface



- Cut in pieces à 200x300x19mm
- Draw from the data sheet of the roof surface, which type of building protection mat is suitable

	Single part
Building protection mat standard 200x300x19	814-0353
Building protection mat foil laminated 200x300x19	814-0352



S.A.R.L CAPENERGIE
Mas d'alhem - 34150 - La Boissière - France
Tél : 04 67 56 77 91 - Fax : 04 67 55 52 25
E-Mail : info@capenergie.fr
www.capenergie.fr