



Flat roof system Lambda
Product catalogue



CONTENTS

LAMBDA.....	3
1. LAMBDA TRIANGLES & MISCELLANEOUS.....	4
2. LAMBDA RAILS & MISCELLANEOUS.....	5
3. LAMBDA INTER-MODULE CLAMPS AND END MODULE CLAMPS.....	7
4. LAMBDA FOR LAMINATES.....	9
5. LAMBDA SETS OF SMALL PARTS	9
6. LAMBDA MISCELLANEOUS	10
7. LAMBDA FIXATION MATERIAL.....	10

In general:

- | For all business transactions, Mounting Systems GmbH's "General terms and conditions" are valid, as well as any items negotiated and confirmed for a specific transaction.
 - | Through the publishing of this catalogue, all former catalogues become invalid.
 - | All information in this document may be subject to alterations.
-

Lambda



Komponenten

- a. Triangle, pre-assembled
- b. Diagonal strut
- c. Base rail with telescoping end piece
- d. Module end clamp
- e. X-Stone
- f. Splice (not depicted)

Notes

- | Lambda is ordered **piece by piece**.
- | Using our **Lambda Calculation Tools**, you can easily verify the static soundness of your system, create a bill of materials and calculate your price.
- | For this system, we have put together a wide range of **documentation** for your convenience. We can provide technical data sheets and installation manuals in different languages. Please do not hesitate to ask for them (confer documents).
- | When requesting quotations, please use our form “**Technical Planning Aid**” (cf. documents) and mail it to sales@mounting-systems.de.
- | **Delivery time:** Goods issue ex works within 3 days after receipt of written order.

Sample order*:

Art.-No.	Description	Quantity
Sample order Lambda		
700-0019	Module clamp 32-46 mm	16
702-0070	Module end clamp 46 mm	8
800-0525	Base rail 13/58, 3 m	4
610-0536	Base rail 13/58, 1.8 m	4
706-0024	Telescoping 13/58	4
706-0023	Splice 13/58	4
720-0516	Lambda strut Set 1.2 m	2
711-0082	Lambda triangle B, with 13 mm hole	10
704-0007	Lambda X-stone pre-assembled	20
806-0032	Hanger bolt M12	20
720-0030	Set: 20 x Anti-slip protection	1
810-0012	Installation manual Lambda ENG	1

* example:

Module field with 2 rows à 5 modules, Module type Conergy PowerPlus (CPP 220), Module orientation portrait, pitch of the triangles 20°, height of building 8 m, terrain category A, wind zone I and snow zone I, non-exposed site, distance between rafters 1.2 m

1. Lambda Triangles & Miscellaneous

Aluminium (EN AW 6063 T66)

Description

Triangle with feet brackets (pitch: 20°, 25°, 30°)

The basic element of the flat roof installation with foot brackets



Is folded for delivery (two-piece leg for 20°, 25° and 30°)

	Single part with drill hole	
	11 mm	13 mm
Triangle A* with feet brackets	711-0079	711-0081
Triangle B* with feet brackets	711-0080	711-0082

Triangle with feet brackets (pitch: 10°, 20°, 25°, 30°)

The basic element of the flat roof installation with foot brackets



The 10° version is pre-assembled for delivery (one-piece leg)
 The 20°, 25° and the 30° version is folded for delivery (one-piece leg)

	Single part with drill hole	
	11 mm	13 mm
Triangle 10° A* with feet brackets	711-0095	711-0096
Triangle 10° B* with feet brackets	711-0097	711-0098
Triangle 20° A* with feet brackets	711-0099	711-0102
Triangle 20° B* with feet brackets	711-0105	711-0108
Triangle 25° A* with feet brackets	711-0100	711-0103
Triangle 25° B* with feet brackets	711-0106	711-0109
Triangle 30° A* with feet brackets	711-0101	711-0104
Triangle 30° A* with feet brackets	711-0107	711-0110

Triangle with ground rail (pitch: 20°, 25°, 30°)

The basic element of the flat roof installation with continuous ground rail



Is folded for delivery (two-piece leg for 20°, 25° and 30°)

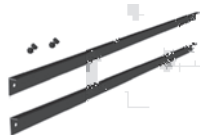
	Single part
Triangle A* with ground rail	711-0083
Triangle B* with ground rail	711-0084

Strut

For stiffening of the triangles

1 Set consists of:

- | 2 struts
- | 5 bolt connections (consisting of 1 Allen bolt M8x20, 2 washers and 1 self-locking hex nut M8x20)



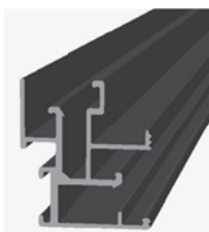
	Set 2 Pcs
Struts up to 1000 mm distance between triangles (for triangle A & B / all pitches)	720-0516
Struts up to 1500 mm distance between triangles (for triangle A & B / all pitches, exception: triangle B 30° up to 1400 mm)	720-0515
Struts up to 1800 mm between triangles (for triangle A landscape, all pitches)	720-0517

* Information for triangle A and B refer to the size of the triangles depending on the module length; triangle A for portrait and landscape installation of all modules < length of 1400 mm; triangle B for portrait installation, length of 1400 mm - 1700 mm. By specifying the module type with the Lambda-Calculation Tool, the right triangle will automatically be selected for each installation. For detailed information, please contact us in advance of your planning.

2. Lambda Rails & Miscellaneous

| Aluminium (EN AW 6063 T66)

Description



Base rail 7/49

| h/w =
49/43.5
| Aluminium
(EN AW
6063 T66)
| $I_x = 7 \text{ cm}^4$
| 1.01 kg/m

Length	Single part	Set of 4
6000 mm	800-0088	
3000 mm	800-0504	720-0214
2400 mm	610-0543	720-0213
1800 mm	610-0533	720-0212
1200 mm	610-0523	720-0211
600 mm	610-0513	720-0210



Base rail 13/58

| h/w = 58/34,2
| Aluminium (EN AW 6063 T66)
| $I_x = 13 \text{ cm}^4$
| 1,22 kg/m

Length	Single part	Set of 4
6000 mm	800-0156	
3000 mm	800-0525	720-0250
2400 mm	610-0545	720-0249
1800 mm	610-0536	720-0248
1200 mm	610-0526	720-0247
600 mm	610-0519	720-0246



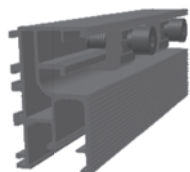
Splice 7/49

Inter-connecting base rails 7/49

	Single part	25 Pcs	Sets	
			50 Pcs	100 Pcs
Splice 7/49	706-0010	720-0066	720-0061	720-0064

Splice 13/58

To connect the base rails 13/58



Aluminium (EN AW 6063 T66)
 Incl. small parts (2 stainless steel Allen bolt M8, pre-assembled)
 l = 160 mm

	Single part	25 Pcs	Sets	
			50 Pcs	
Splice 13/58	706-0023	720-0253	720-0254	

Telescoping end piece 7/49

Adjusting to the millimetre the length of a line of base rail 7/49



	Single part	Set
		6 Pcs
Telescoping end piece 7/49	706-0012	720-0225

Telescoping end piece 13/58

For the millimetre-exact end of the rail track with the base rail 13/58



Aluminium (EN AW 6063 T66)
 Incl. 2 base rail elements à 56 mm and small parts (2 stainless steel Allen bolt M8, pre-assembled)
 l = 750 mm

	Single part	Set
		4 Pcs
Telescoping end piece 13/58	706-0024	720-0270



Lambda X-Stone pre-assembled

For the cross assembly of the base rails on the ground rails of the triangles

	Single part	Set
		20 Pcs
Lambda X-Stone	704-0007	720-0521

3. Lambda Inter-module clamps and end module clamps

Description

Box-End clamp for portrait installation

Fixing the modules to the base rails



Incl. small parts (pre-assembled):

- | 1 Module end clamp, Aluminium (EN AW 6063 T66)
- | 1 Stainless steel Allen bolt M8
- | 1 Stainless steel lock washer 8 mm
- | 1 Quickstone, Aluminium (EN AW 6063 T66)

	Single part	Sets		
		10 Pcs	50 Pcs	100 Pcs
Frame 30 mm	702-0057			
Frame 31 mm	702-0127	720-0692	720-0693	720-0694
Frame 36 mm	702-0062			
Frame 44 mm	702-0069			

Module end clamps for different frame heights can be produced to order. Please indicate the desired frame height in your order.

Z-End clamp for portrait installation

Fixing the modules to the base rails



Incl. small parts (pre-assembled):

- | 1 Module end clamp, Aluminium (EN AW 6063 T66)
- | 1 Stainless steel Allen bolt M8
- | 1 Stainless steel lock washer 8 mm
- | 1 Quickstone, Aluminium (EN AW 6063 T66)

	Single part	Sets		
		10 Pcs	50 Pcs	100 Pcs
Frame 33 mm	702-0117	720-0116	720-0146	720-0176
Frame 35 mm	702-0061	720-0118	720-0148	720-0178
Frame 38 mm	702-0128	720-0743	720-0744	720-0745
Frame 40 mm	702-0130	720-0746	720-0747	720-0748
Frame 42 mm	702-0129	720-0749	720-0750	720-0751
Frame 43 mm	702-0068	720-0125	720-0155	720-0185
Frame 45 mm	702-0131	720-0752	720-0753	720-0754
Frame 46 mm	702-0070	720-0127	720-0157	720-0187
Frame 50 mm	702-0072	720-0129	720-0159	720-0189

Module end clamps for different frame heights can be produced to order. Please indicate the desired frame height in your order.

Description

Module clamp for portrait installation

Fixing the modules to the base rail

Incl. small parts (pre-assembled):

- | 1 Module clamp, Aluminium (EN AW 6063 T66)
- | 1 Stainless steel Allen bolt M8
- | 1 Stainless steel lock washer 8 mm
- | 1 Quickstone, Aluminium (EN AW 6063 T66)



Module clamps are also available in black.

Length of bolts:

- | Frame 24-32: Allen bolt M8x40 mm
- | Frame 32-46: Allen bolt M8x55 mm
- | Frame 46-51: Allen bolt M8x65 mm

Clamping range Lambda	Single part	Sets		
		20 Pcs	50 Pcs	100 Pcs
Frame 24 - 32 mm	700-0018	720-0070	720-0073	720-0076
Frame 32 - 46 mm	700-0019	720-0071	720-0074	720-0077
Frame 46 - 51 mm	700-0020	720-0072	720-0075	720-0078



The Inter-module clamps are identical with those used for Theta. However, the possible clamping ranges are reduced for Theta. The Lamda clamping ranges are therefore not valid for Theta! The clamping ranges for Alpha and Lambda are identical.

Module end clamp for landscape installation

Fixing the module end clamps to the base rail

Incl. small parts (pre-assembled):

- | 1 Module clamp, Aluminium (EN AW 6063 T66)
- | 1 Stainless steel Allen bolt M8
- | 1 Stainless steel lock washer 8 mm
- | 1 Quickstone, Aluminium (EN AW 6063 T66)



Clamping range	Single part
Frame 32 - 56 mm	702-0105

4. Lambda for Laminates

Description

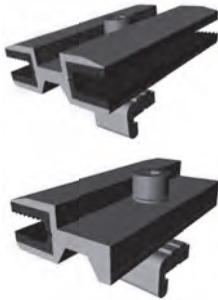
Laminate clamps 80 mm

Fixing the laminates to the base rail

| Approved for FirstSolar, Calyxo and Sulfurcell

Incl. small parts (pre-assembled):

- | 1 Laminate clamp, Aluminium (EN AW 6063 T66)
- | 1 Stainless steel Allen bolt M8
- | 1 Stainless steel lock washer 8 mm
- | 1 Quickstone, Aluminium (EN AW 6063 T66)



	Single part	Set 20 Pcs
Inter laminate clamp 80 mm	700-0037	720-0508
Laminate end clamp 80 mm	702-0101	720-0507

Laminate anti-slip protection 250 mm

For Laminates

Anti-slip protection for each module when installing modules in portrait orientation. The anti-slip protection will be clipped in the modules.

| Aluminium (EN AW 6063 T66) and EPDM rubber



	Single part
Laminate anti-slip protection 250 mm	712-0040

5. Lambda Sets of small parts

Description

Anti-slip device for modules

Facilitating the portrait installation

Anti-slip protection for the lowest row of modules when installing modules in portrait orientation. For each module in that row, 2 bolts and 2 nuts are needed.

All components are made of stainless steel.

- | Hex bolt M6x20 mm
- | Hex nut M6



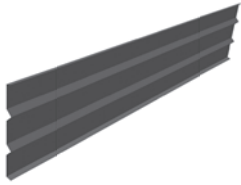
	20 Pcs for 10 modules	50 Pcs for 25 modules
Anti-slip protection	720-0030	720-0031

6. Lambda Miscellaneous

Description

Back plate

To minimize the wind load – optional additional component



- | Alternative to diagonal strut
- | Aluminium (EN AW 5005)

	Single part	
Back plate for triangle A, 20°, 2500 x 345 mm	801-0046	

Trapezoidal sheet

For ballast – optional additional component

- | Steel

	Single part	
Trapezoidal sheet 50/250, 1x2m	801-0212	

7. Lambda Fixation material

Description

Metal wall plug

To secure the triangles in concrete substructures



- | Stainless steel

	Single part	Set 20 Pcs
Metal wall plug M10	807-0111	720-0523

Drilling screw

To secure the back plate



- | Stainless steel

	Set 100 Pcs	
Drilling screw JT3-2-6x25-E 16/2 A2	720-0520	

Blind rivet

To secure the triangles on e.g. SolRec base plate



| Aluminium/Stainless steel

	Set 100 Pcs
Blind rivets	720-0518

Blind rivet

To secure the triangles on e.g. trapezoid metal sheets



	Single part	Set 100 Pcs
Blind rivet 4.8x11.5 A2/A2 Claming range 3.5-6mm	807-0046	720-0695

Description

Stainless steel Hanger bolt M12

Connecting triangles to metal roofs or similar

| Incl. EPDM seal and nuts



The triangle can be fastened with the pre-assembled nuts of the hanger bolt.

	Single part	Set 20 Pcs
Hanger bolt M12x300	806-0032	720-0519

EJOT® - Solar fasteners



Fixing PV-installations to profiled sheeting, sandwich-elements and corrugated fibre cement claddings

- | Like the standard hanger bolts, the Solar fasteners are drilled into the sub construction of the roof and are thus discharging all occurring loads into that construction.
- | Calottes or sealing washers add additional security against leakage
- | Available for all standard sub constructions, both from wood and from metal

On enquiry



Roof fixations or counterbalances are not included in delivery. When using counterbalances it is important to ensure an adequate separation layer (e.g. construction protection mat) to the roof skin!



S.A.R.L CAPENERGIE
Mas d'alhem - 34150 - La Boissière - France
Tél : 04 67 56 77 91 - Fax : 04 67 55 52 25
E-Mail : info@capenergie.fr
www.capenergie.fr