



In-roof system Theta
Product catalogue



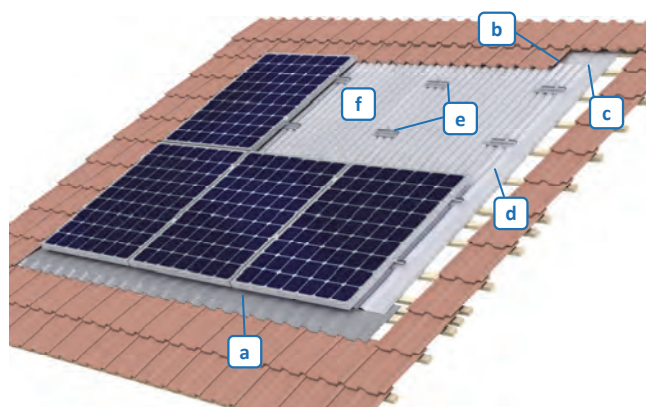
Contents

THETA	3
1.THETA ADAPTERS	4
2.THETA SEALING STRIPS	5
3.THETA CORRUGATED METAL SHEETS	6
4.THETA FLASHINGS	6
5.THETA INTER-MODULE CLAMPS AND MODULE END CLAMPS.....	7
6.THETA FOR LAMINATES	8
7.THETA SMALL PARTS	9
8.THETA SAMPLES.....	10
9.THETA MISCELLANEOUS.....	10

In general:

- | For all business transactions, Mounting Systems GmbH's "General terms and conditions" are valid, as well as any items negotiated and confirmed for a specific transaction.
 - | Through the publishing of this catalogue, all former catalogues become invalid.
 - | All information in this document may be subject to alterations.
-

Theta



Components:

- a. Sealing strip
- b. Top flashing
- c. Corner flashing
- d. Lateral flashing
- e. Adapter
- f. Corrugated metal sheet
- g. Small parts (not depicted)

Notes

- | Theta is ordered **piece by piece**.
- | Using our **Theta Calculation Tools**, you can easily verify the static soundness of your system, create a bill of materials and calculate your price.
- | For this system, we have put together a wide range of **documentation** for your convenience. We can provide technical data sheets and installation manuals in English, German, French, Italian and Spanish. Please do not hesitate to ask for them (confer documents).
- | For requests concerning an adaptation of the Theta, please use our form “**Technical Planning Aid**” (cf. documents) and mail it to sales@mounting-systems.de.
- | **Delivery time:** Goods issue ex works within 3 days after receipt of written order

Sample order*:

Art.-No.	Description	Quantity	Unit
Sample order Theta			
700-0033	Inter-module clamp Frame 46-50 mm	16	Pc
702-0070	Module end clamp Frame 46mm	8	Pc
712-0045	Theta adapter portrait	24	Pc
814-0309	MetallRoll, roll à 10 m, 320 mm	2	Pc
809-0050	Top sealing strip, tree-foam profile filler, 750 mm (optional)	7	Pc
814-0310	Sealing strip, triangular foam filler, 1000 mm (optional)	8	Pc
801-0047	Lateral flashing, 2 m	4	Pc
801-0045	Theta top flashing, flattened, 2.05 m	3	Pc
801-0032	Theta corrugated metal sheet 1067 mm x 1000 mm; 0.8 mm	24	Pc
801-0048	Theta corner flashing, left	1	Pc
801-0049	Theta corner flashing, right	1	Pc
720-0425	Set: 100 x roofing screws 4.5 x 45 mm with 15 mm washer A2	3	Pc
720-0423	Set: 100 x JT3-2-6.5 x 65 mm E16/2.0	1	Pc
814-0048	Theta profile filler	5	Pc
720-0420	Set: 10 x Theta Mounting aid	1	Pc
807-0112	Calotte for roofing screw 4.5 x 45 mm	96	Pc
814-0002	Retaining clip	25	Pc
809-0053	Double-sided adhesive tape, roll à 5 m (optional)	2	Pc
810-0007	Installation manual Theta ENG	1	Pc

* Example:

Module field with 2 rows and 5 columns, module type CPP210, module orientation portrait, gable roof, height of building 7 m, 78 m ground level elevation, roof pitch 25°, terrain category A, wind zone II and snow zone I, non-exposed site

1. Theta Adapters

Aluminium (EN AW 6063 T66)

Description

Short adapter for landscape installation

For landscape installation of the module



Length 10 cm
Height of profile 31.5 mm
 $I_x = 13 \text{ cm}^4$
0.33 kg / Pc

Short adapter for landscape installation,
with EPDM

Single part

712-0069

Intermediate adapter für landscape installation

For landscape installation of the module



Length 20 cm
Height of profile 31.5 mm
 $I_x = 13 \text{ cm}^4$
0.66 kg / Pc

Intermediate adapter for landscape
installation, with EPDM

Single part

712-0066

Long adapter for landscape installation

For landscape installation of the module



Length 38 cm
Height of profile 31.5 mm
 $I_x = 13 \text{ cm}^4$
1.19 kg / Pc

Long adapter for landscape installation,
with EPDM

Single part

712-0047

Adapter for portrait installation

For portrait installation of the module



Height of profile 22 mm
 $I_x = 6.67 \text{ cm}^4$
0.30 kg / Pc

Adapter for portrait installation,
with EPDM

Single part

712-0045

Step

Facilitating the installation when placing the modules in landscape orientation



6x step

Set 6 Pcs

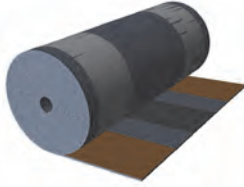
720-0402

2. Theta Sealing strips

Description

MetallRoll

Ensuring a watertight transition between module field and the tiles below

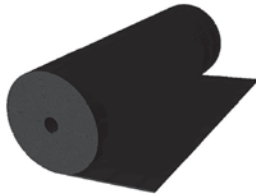


- | 2 adhesive strips (Butyl strip)
- | Pleated strips of aluminum, color coated with acrylic paint

	m per roll	Single part
MetallRoll, 320 mm, red	10.00	814-0309
MetallRoll, 320 mm, black	10.00	814-0316

Perform

Ensuring a watertight transition between module field and the tiles below



- | Suitable for high roof tiles which require a wider sealing strip
- | Expanded metal mesh made of aluminum, connected to a rubber polymer

	m per roll	Single part
Perform, 465 mm, red	4.00	814-0317
Perform, 465 mm, black	4.00	814-0318
Perform, 465 mm, grey	4.00	814-0319
Perform, 465 mm, brown	4.00	814-0320

Glue for Perform

Fixing the Perform on the roof substructure



	Single part
Glue for Perform, 290ml	814-0322

Hammer for Perform

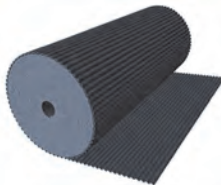
Fixing the Perform on the roof substructure



	Single part
Hammer for Perform	814-0324

Pleated lead strip

Ensuring a watertight transition between module field and the tiles below



	m per roll	Single part
Pleated lead strip, 250 mm	8.25	814-0303
Pleated lead strip, 450 mm	4.40	814-0304

3. Theta Corrugated metal sheets

Description

Corrugated metal sheets

- | Aluminium (EN AW 3005)
- | Type of corrugation 18/76



	Single part
1067 x 1000 x 0.8 mm	801-0032
1067 x 1500 x 0.8 mm	801-0031

Other lengths are readily available on request. The minimum order quantity for those order-specific lengths is 600 m².

DRIPSTOP[®] Corrugated metal sheets with anticondesation fleece

Extract of fleece coating:



- | Aluminium (EN AW 3005) with fleece coating
- | Type of corrugation 18/76

	Single part
1067 x 1500 x 0.8 mm	801-0050
1067 x 1000 x 0.8 mm	801-0052

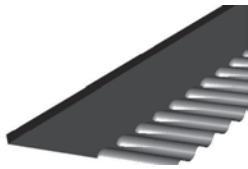
4. Theta Flashings

- | Aluminium (EN AW 5005)

Description

Top flashing

For a smooth transition between the module field and the tiles above



	Single part
Top flashing, corrugated and upstand, 2.05 m	801-0051
Top flashing, corrugated and upstand, 969 mm	801-0054

Corner flashing

For a smooth transition between the corner of the module field and the roof covering



	Single part
Corner flashing, corrugated and upstand, left	801-0048
Corner flashing, corrugated and upstand, right	801-0049

Lateral flashing

For a smooth transition between the module field and the tiles on either side



	Single part
Lateral flashing, corrugated and upstand, 2 m	801-0047

5. Theta Inter-module clamps and module end clamps

Description



Box-End clamp

Fixing the modules to the adapters

Incl. small parts (pre-assembled):

- 1 Module end clamp, Aluminium (EN AW 6063 T66)
- 1 Stainless steel Allen bolt M8
- 1 Stainless steel lock washer 8 mm
- 1 Quickstone, Aluminium (EN AW 6063 T66)

Module end clamps for different frame heights can be produced to order. Please indicate the desired frame height in your order. Black Box-End clamps are available on request.

	Single part	Sets		
		10 Pcs	50 Pcs	100 Pcs
Frame 30 mm	702-0057			
Frame 31 mm	702-0127	720-0692	720-0693	720-0694
Frame 36 mm	702-0062			
Frame 44 mm	702-0069			

Z-End clamp for portrait installation

Fixing the modules to the adapters

Incl. small parts (pre-assembled):

- 1 Module end clamp, Aluminium (EN AW 6063 T66)
- 1 Stainless steel Allen bolt M8
- 1 Stainless steel lock washer 8 mm
- 1 Quickstone, Aluminium (EN AW 6063 T66)



Module end clamps for different frame heights can be produced to order. Please indicate the desired frame height in your order. Black Z-End clamps are available on request.

	Single part	Sets		
		10 Pcs	50 Pcs	100 Pcs
Frame 33 mm	702-0117	720-0116	720-0146	720-0176
Frame 35 mm	702-0061	720-0118	720-0148	720-0178
Frame 38 mm	702-0128	720-0743	720-0744	720-0745
Frame 40 mm	702-0130	720-0746	720-0747	720-0748
Frame 42 mm	702-0129	720-0749	720-0750	720-0751
Frame 43 mm	702-0068	720-0125	720-0155	720-0185
Frame 45 mm	702-0131	720-0752	720-0753	720-0754
Frame 46 mm	702-0070	720-0127	720-0157	720-0187
Frame 50 mm	702-0072	720-0129	720-0159	720-0189

Description
Inter-module clamps
Fixing modules to the adapters

Incl. small parts (pre-assembled):

- | 1 Inter-module clamp, Aluminium (EN AW 6063 T66)
- | 1 Stainless steel Allen bolt M8
- | 1 Stainless steel lock washer 8 mm
- | 1 Quickstone, Aluminium (EN AW 6063 T66)



Module clamps are also available in black.

Length of bolts:

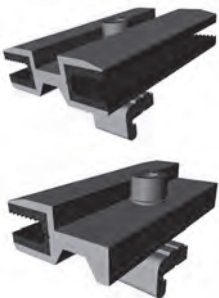
- | Frame 26-30: Allen bolt M8x40 mm
- | Frame 31-35: Allen bolt M8x45 mm
- | Frame 36-40: Allen bolt M8x50 mm
- | Frame 41-45: Allen bolt M8x55 mm
- | Frame 46-50: Allen bolt M8x60 mm
- | Frame 51-55: Allen bolt M8x65 mm

Clamping range Theta	Single part	Sets		
		20 Pcs	50 Pcs	100 Pcs
Frame 26 - 30 mm	700-0018	720-0070	720-0073	720-0076
Frame 31 - 35 mm	700-0031	720-0256	720-0259	720-0262
Frame 36 - 40 mm	700-0032	720-0257	720-0260	720-0263
Frame 41 - 45 mm	700-0019	720-0071	720-0074	720-0077
Frame 46 - 50 mm	700-0033	720-0258	720-0261	720-0264
Frame 51 - 55 mm	700-0020	720-0072	720-0075	720-0078



The Inter-module clamps are identical with those used for Alpha and Lambda. However, the possible clamping ranges are reduced for Theta. The Alpha and Lambda clamping ranges are therefore not valid for Theta!

6. Theta for Laminates

Description
Laminate clamps 80 mm
For the fixation of the laminates to the adapters


- | Approved for FirstSolar, Calyxo and Sulfurcell


Incl. small parts (pre-assembled):


- | 1 Laminate clamp, Aluminium (EN AW 6063 T66)
- | 1 Stainless steel Allen bolt M8
- | 1 Stainless steel lock washer 8 mm
- | 1 Quickstone, Aluminium (EN AW 6063 T66)


	Single part	Set 20 Pcs
Inter laminate clamp 80 mm	700-0037	720-0508
Laminate end clamp 80 mm	702-0101	720-0507

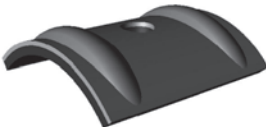
7. Theta Small parts


Description

	Sheet metal screw JT3-2 – 6.5x65 mm E16/2.0 Fixing adapters to the roof		
	With drill bit	Set 30 Pcs	Set 100 Pcs
	JT3-2 – 6.5x65 mm E16/2.0	720-0545	720-0423

	Roofing screw 4.5x45 mm with 15 mm washer A2 Fixing corrugated metal sheets and lateral flashings to the roof (in connection with calottes or fixing clip)		
	Without drill bit	Set 30 Pcs	Set 100 Pcs
	Roofing screw 4.5x45 mm with 15 mm washer A2	720-0526	720-0525

	Fixing clip Fixing the upper and lateral flashings		
	For the fixation of the clip, 1 roofing screw 4.5 x 45 mm is necessary		
	Fixing clip	Single part	814-0002

	Calottes Additional protection of the corrugated metal sheets at the fixing points			
	Calotte for roofing screw 4.5 x 45 mm	Single part	Set 30 Pcs	Set 100 Pcs
		807-0112	720-0543	720-0544

	X-Stone 90° pre-assembled For installations with two layers of rails		
	Compatible with all adapters		
	X-Stone 90°	Single part	Set 20 Pcs
	704-0003	720-0194	720-0196

8. Theta Samples

Description



Sample case Theta

Sample case with various Theta parts.

Sample case Theta

Single part
720-0553

Product samples Theta

Sample box with different Theta components loosely packed in a carton

Loose product samples Theta

Single part
720-1063

9. Theta Miscellaneous

Description



Profile filler

Lining the lower edge of the corrugated metal sheet

Profile filler 1067 mm

Single part
814-0048



Comb for insect protection

Ventilation at the lower edge of the corrugated metal sheet

Comb for insect protection 1005 mm

Single part
814-0321



Tree-foam profile filler

Lining the upper tiles – optional

Tree-foam profile filler 795 mm

Single part
809-0050



Triangular foam filler

Lining the tiles adjoining the module field – optional

Self-adhesive

Adhesive seal 1000 mm, taper height 60 mm

Single part
814-0310

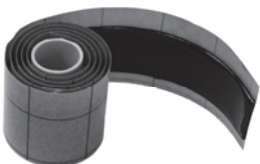


Compression strip

Lining the tiles adjoining the module field – optional

Compression strip 4 m

Single part
153-0011

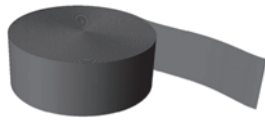


Butyl strip

Additional Sealing for vertical overlaps of the flashings – optional

Butyl strip 20x1,5x500mm, black

Single part
814-0323



Double-sided adhesive tape

Double-sided adhesive tape, 15 mm	m per roll 5.00	Single part 809-0053
-----------------------------------	--------------------	--------------------------------



Shim

Enabling up to 6 mm height adjustment of the portrait adapters – optional

Shim 2 mm	Set 20 Pcs 720-0401
-----------	-------------------------------



Mounting aid

Facilitating the installation of the corrugated metal sheets

Mounting aid	Set 10 Pcs 720-0420
--------------	-------------------------------



S.A.R.L CAPENERGIE
Mas d'alhem - 34150 - La Boissière - France
Tél : 04 67 56 77 91 - Fax : 04 67 55 52 25
E-Mail : info@capenergie.fr
www.capenergie.fr